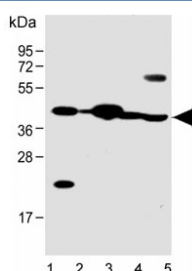


Follistatin-like 1 Antibody / FSTL1 (F54340)

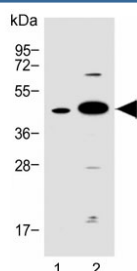
Catalog No.	Formulation	Size
F54340-0.4ML	In 1X PBS, pH 7.4, with 0.09% sodium azide	0.4 ml
F54340-0.08ML	In 1X PBS, pH 7.4, with 0.09% sodium azide	0.08 ml

Bulk quote request

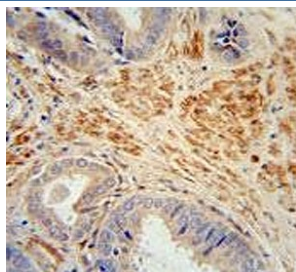
Availability	1-3 business days
Species Reactivity	Human, Mouse, Rat
Format	Purified
Clonality	Polyclonal (rabbit origin)
Isotype	Rabbit Ig
Purity	Antigen affinity purified
UniProt	Q12841
Applications	Flow Cytometry : 1:25 (1x10 ⁶ cells) Western Blot : 1:500-1:2000 Immunohistochemistry (FFPE) : 1:25
Limitations	This Follistatin-like 1 antibody is available for research use only.



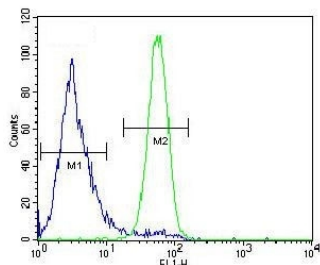
Western blot testing of human 1) HeLa, 2) placenta, 3) heart, 4) mouse heart and 5) rat heart lysate with Follistatin-like 1 antibody. Expected molecular weight: 35-55 kDa depending on level of glycosylation.



Western blot testing of human 1) A549 and 2) heart lysate with Follistatin-like 1 antibody. Expected molecular weight: 35-55 kDa depending on level of glycosylation.



IHC testing of FFPE human prostate carcinoma tissue with Follistatin-like 1 antibody.
HIER: steam section in pH6 citrate buffer for 20 min and allow to cool prior to staining.



Flow cytometry testing of human A549 cells with Follistatin-like 1 antibody; Blue=isotype control, Green= Follistatin-like 1 antibody.

Description

Promotes endothelial cell survival, migration and differentiation into network structures in an AKT-dependent manner. Also promotes survival of cardiac myocytes. [UniProt]

Application Notes

The stated application concentrations are suggested starting points. Titration of the Follistatin-like 1 antibody may be required due to differences in protocols and secondary/substrate sensitivity.

Immunogen

A portion of amino acids 280-308 from the human protein was used as the immunogen for the Follistatin-like 1 antibody.

Storage

Aliquot the Follistatin-like 1 antibody and store frozen at -20oC or colder. Avoid repeated freeze-thaw cycles.