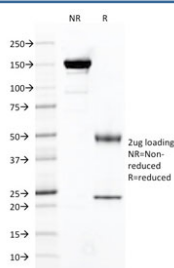


FOLH1 Antibody / Folate Hydrolase 1 [clone FOLH1/2121] (V7780)

Catalog No.	Formulation	Size
V7780-100UG	0.2 mg/ml in 1X PBS with 0.1 mg/ml BSA (US sourced) and 0.05% sodium azide	100 ug
V7780-20UG	0.2 mg/ml in 1X PBS with 0.1 mg/ml BSA (US sourced) and 0.05% sodium azide	20 ug
V7780SAF-100UG	1 mg/ml in 1X PBS; BSA free, sodium azide free	100 ug

[Bulk quote request](#)

Availability	1-3 business days
Species Reactivity	Human
Format	Purified
Host	Mouse
Clonality	Monoclonal (mouse origin)
Isotype	Mouse IgG2b, kappa
Clone Name	FOLH1/2121
Purity	Protein G affinity chromatography
UniProt	Q04609
Applications	ELISA (order BSA-free Format For Coating) :
Limitations	This FOLH1 antibody is available for research use only.



SDS-PAGE analysis of purified, BSA-free FOLH1 antibody as confirmation of integrity and purity.

Description

Folate hydrolase 1 (FOLH1), also known as Prostate-specific membrane antigen (PSMA), is a type II transmembrane glycoprotein belonging to the M28 peptidase family. FOLH1 has two enzymatic activities, one as a prostate-specific

integral membrane folate hydrolase and the other as a carboxypeptidase. In the prostate the protein is up-regulated in cancerous cells and is used as an effective diagnostic and prognostic indicator of prostate cancer.

Application Notes

Optimal dilution of the FOLH1 antibody should be determined by the researcher.

Immunogen

A portion of amino acids 232-433 from the human protein was used as the immunogen for this FOLH1 antibody.

Storage

Store the FOLH1 antibody at 2-8°C (with azide) or aliquot and store at -20°C or colder (without azide).