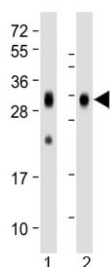


## Folate Receptor beta Antibody / FOLR2 [clone 1905CT501.41.76] (F54170)

Catalog No.	Formulation	Size
F54170-0.2ML	In 1X PBS, pH 7.4, with 0.09% sodium azide	0.2 ml
F54170-0.05ML	In 1X PBS, pH 7.4, with 0.09% sodium azide	0.05 ml

[Bulk quote request](#)

<b>Availability</b>	1-3 business days
<b>Species Reactivity</b>	Human
<b>Format</b>	Purified
<b>Host</b>	Mouse
<b>Clonality</b>	Monoclonal (mouse origin)
<b>Isotype</b>	IgG2b, kappa
<b>Clone Name</b>	1905CT501.41.76
<b>Purity</b>	Protein G purified
<b>UniProt</b>	P14207
<b>Applications</b>	Western Blot : 1:1000-1:2000
<b>Limitations</b>	This Folate Receptor beta antibody is available for research use only.



Western blot testing of human 1) spleen and 2) placenta lysate with Folate Receptor beta antibody at 1:1000. Predicted molecular weight ~29 kDa.

### Description

Binds to folate and reduced folic acid derivatives and mediates delivery of 5-methyltetrahydrofolate and folate analogs into the interior of cells. Has high affinity for folate and folic acid analogs at neutral pH. Exposure to slightly acidic pH after receptor endocytosis triggers a conformation change that strongly reduces its affinity for folates and mediates their release.

## **Application Notes**

The stated application concentrations are suggested starting points. Titration of the Folate Receptor beta antibody may be required due to differences in protocols and secondary/substrate sensitivity.

## **Immunogen**

Recombinant human FOLR2 protein was used as the immunogen for the Folate Receptor beta antibody.

## **Storage**

Aliquot the Folate Receptor beta antibody and store frozen at -20oC or colder. Avoid repeated freeze-thaw cycles.