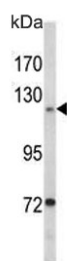


Focal Adhesion Kinase Antibody / FAK1 / PTK2 (F54458)

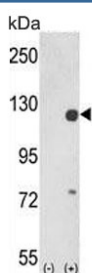
Catalog No.	Formulation	Size
F54458-0.4ML	In 1X PBS, pH 7.4, with 0.09% sodium azide	0.4 ml
F54458-0.08ML	In 1X PBS, pH 7.4, with 0.09% sodium azide	0.08 ml

[Bulk quote request](#)

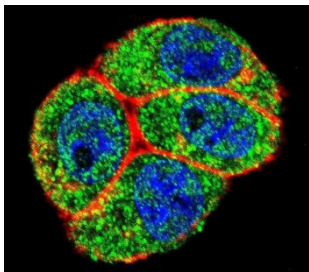
Availability	1-3 business days
Species Reactivity	Human
Format	Purified
Clonality	Polyclonal (rabbit origin)
Isotype	Rabbit Ig
Purity	SAS precipitation
UniProt	Q05397
Applications	Immunofluorescence : 1:25 Flow Cytometry : 1:25 (1x10e6 cells) Immunohistochemistry (FFPE) : 1:25 Western Blot : 1:500-1:2000
Limitations	This Focal Adhesion Kinase antibody is available for research use only.



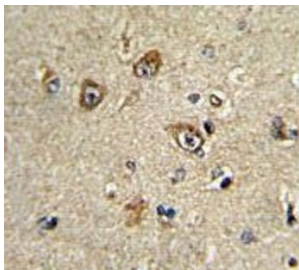
Western blot testing of human T47-D cell lysate with Focal Adhesion Kinase antibody.
Predicted molecular weight ~119 kDa.



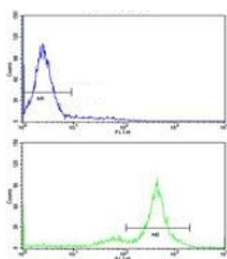
Western blot testing of 1) non-transfected and 2) transfected 293 cell lysate with Focal Adhesion Kinase antibody.



Immunofluorescent staining of human HeLa cells with Focal Adhesion Kinase antibody (green), DAPI nuclear stain (blue) and anti-Actin (red).



IHC testing of FFPE human brain tissue with Focal Adhesion Kinase antibody. HIER: steam section in pH6 citrate buffer for 20 min and allow to cool prior to staining.



Flow cytometry testing of human K562 cells with Focal Adhesion Kinase antibody; Blue=isotype control, Green= Focal Adhesion Kinase antibody.

Description

FAK1/PTK2 is a cytoplasmic protein tyrosine kinase which is found concentrated in the focal adhesions that form between cells growing in the presence of extracellular matrix constituents. This protein is a member of the FAK subfamily of protein tyrosine kinases but lacks significant sequence similarity to kinases from other subfamilies.

Application Notes

The stated application concentrations are suggested starting points. Titration of the Focal Adhesion Kinase antibody may be required due to differences in protocols and secondary/substrate sensitivity.

Immunogen

A portion of amino acids 396-423 from the human protein was used as the immunogen for the Focal Adhesion Kinase antibody.

Storage

Aliquot the Focal Adhesion Kinase antibody and store frozen at -20°C or colder. Avoid repeated freeze-thaw cycles.

