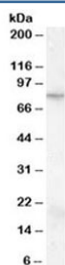


FMR1 Antibody (R35784)

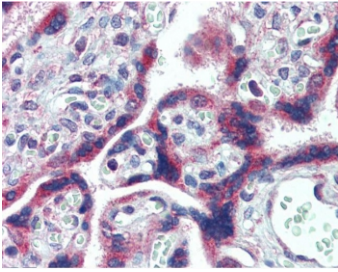
Catalog No.	Formulation	Size
R35784-100UG	0.5 mg/ml in 1X TBS, pH7.3, with 0.5% BSA (US sourced) and 0.02% sodium azide	100 ug

[Bulk quote request](#)

Availability	1-3 business days
Species Reactivity	Human
Predicted Reactivity	Mouse, Rat, Dog
Format	Antigen affinity purified
Host	Goat
Clonality	Polyclonal (goat origin)
Isotype	Goat Ig
Purity	Antigen affinity
Gene ID	2332
Applications	Western Blot : 0.1-0.5ug/ml IHC (FFPE) : 2.5ug/ml ELISA (peptide) LOD : 1:128000
Limitations	This FMR1 antibody is available for research use only.



Western blot testing of KELLY cell lysate with FMR1 antibody at 0.1ug/ml.
Predicted/observed molecular weight: ~71/67-90 kDa.



IHC testing of FFPE human placenta tissue with FMR1 antibody at 2.5ug/ml. Required HIER: steamed antigen retrieval with pH6 citrate buffer; AP-staining.

Description

Additional name(s) for this target protein: Fragile X mental retardation 1; Fragile X mental retardation protein; FMRP

Application Notes

Optimal dilution of the FMR1 antibody should be determined by the researcher.

Immunogen

Amino acids RTGKDRNQKKEKPD were used as the immunogen for this FMR1 antibody.

Storage

Aliquot and store the FMR1 antibody at -20oC.