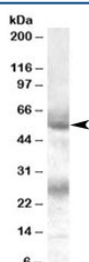


## FLVCR Antibody (R34680)

Catalog No.	Formulation	Size
R34680-100UG	0.5 mg/ml in 1X TBS, pH7.3, with 0.5% BSA (US sourced) and 0.02% sodium azide	100 ug

[Bulk quote request](#)

Availability	1-3 business days
Species Reactivity	Human
Format	Antigen affinity purified
Host	Goat
Clonality	Polyclonal (goat origin)
Isotype	Goat Ig
Purity	Antigen affinity
Gene ID	28982
Applications	Western Blot : 0.1-0.3ug/ml ELISA (peptide) LOD : 1:128000
Limitations	This FLVCR antibody is available for research use only.



Western blot testing of human bone marrow lysate with FLVCR antibody at 0.1ug/ml. The expected ~55kDa band and the additional ~26kDa band are blocked by the immunizing peptide.

## Description

Additional name(s) for this target protein: Feline leukemia virus subgroup C cellular receptor; FLVCR1

## Application Notes

Optimal dilution of the FLVCR antibody should be determined by the researcher.

## Immunogen

Amino acids KTVMLSKQSESAI were used as the immunogen for this FLVCR antibody.

## **Storage**

Aliquot and store the FLVCR antibody at -20oC.