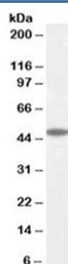


## Flotillin 2 Antibody (R35938)

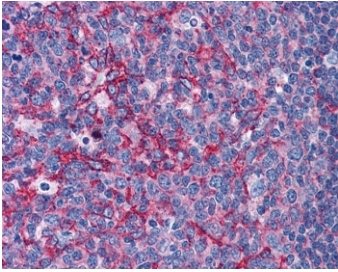
Catalog No.	Formulation	Size
R35938-100UG	0.5 mg/ml in 1X TBS, pH7.3, with 0.5% BSA (US sourced) and 0.02% sodium azide	100 ug

[Bulk quote request](#)

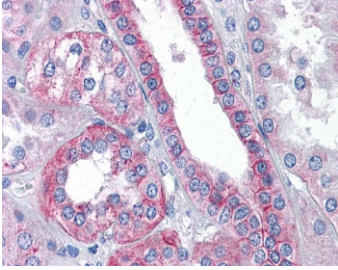
Availability	1-3 business days
Species Reactivity	Human
Predicted Reactivity	Cow, Dog
Format	Antigen affinity purified
Host	Goat
Clonality	Polyclonal (goat origin)
Isotype	Goat Ig
Purity	Antigen affinity
Gene ID	2319
Localization	Cytoplasmic, membrane
Applications	Western Blot : 0.1-0.3ug/ml IHC (FFPE) : 3.75ug/ml ELISA (peptide) LOD : 1:32000
Limitations	This Flotillin 2 antibody is available for research use only.



Western blot testing of human cerebellum lysate with Flotillin 2 antibody at 0.1 ug/ml.  
Predicted molecular weight: ~47 kDa.



IHC testing of FFPE human tonsil tissue with Flotillin 2 antibody at 3.75ug/ml. Required HIER: steamed antigen retrieval with pH6 citrate buffer; AP-staining.



IHC testing of FFPE human kidney tissue with Flotillin 2 antibody at 3.75ug/ml. Required HIER: steamed antigen retrieval with pH6 citrate buffer; AP-staining.

## Description

Additional name(s) for this target protein: FLOT2

## Application Notes

Optimal dilution of the Flotillin 2 antibody should be determined by the researcher.

## Immunogen

Amino acids SKIPLIKKATGVQV were used as the immunogen for this Flotillin 2 antibody.

## Storage

Aliquot and store the Flotillin 2 antibody at -20oC.