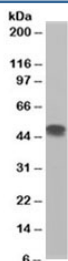


## Flotillin 1 Antibody (R35932)

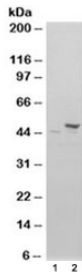
Catalog No.	Formulation	Size
R35932-100UG	0.5 mg/ml in 1X TBS, pH7.3, with 0.5% BSA (US sourced) and 0.02% sodium azide	100 ug

[Bulk quote request](#)

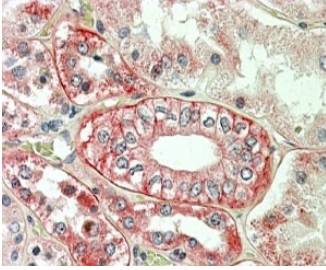
<b>Availability</b>	1-3 business days
<b>Species Reactivity</b>	Human
<b>Predicted Reactivity</b>	Cow, Dog, Pig
<b>Format</b>	Antigen affinity purified
<b>Host</b>	Goat
<b>Clonality</b>	Polyclonal (goat origin)
<b>Isotype</b>	Goat Ig
<b>Purity</b>	Antigen affinity
<b>Gene ID</b>	10211
<b>Applications</b>	Western Blot : 0.3-1ug/ml Immunohistochemistry (FFPE) : 3-5ug/ml ELISA (peptide) LOD : 1:32000
<b>Limitations</b>	This Flotillin 1 antibody is available for research use only.



Western blot testing of H460 lysate with Flotillin 1 antibody at 0.3ug/ml.  
Expected/observed molecular weight ~49kDa.



Western blot of HEK293 lysate overexpressing FLOT1 probed with Flotillin 1 antibody (mock transfection in lane 1). Expected/observed molecular weight ~49kDa.



IHC staining of FFPE human kidney with Flotillin antibody at 3.8ug/ml. HIER: steamed with pH6 citrate buffer, AP-staining.

## Description

Additional name(s) for this target protein: FLOT1

## Application Notes

Optimal dilution of the Flotillin 1 antibody should be determined by the researcher.

## Immunogen

Amino acids SISQVNHKPLRTA were used as the immunogen for this Flotillin 1 antibody.

## Storage

Aliquot and store the Flotillin 1 antibody at -20oC.