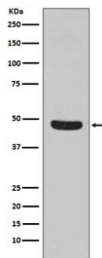


## Flotillin 1 Antibody [clone BHG-6] (RQ4792)

Catalog No.	Formulation	Size
RQ4792	Antibody in PBS with 0.02% sodium azide, 50% glycerol and 0.4-0.5mg/ml BSA	100 ul

[Bulk quote request](#)

<b>Availability</b>	1-2 weeks
<b>Species Reactivity</b>	Human
<b>Format</b>	Purified
<b>Host</b>	Rabbit
<b>Clonality</b>	Rabbit Monoclonal
<b>Isotype</b>	Rabbit IgG
<b>Clone Name</b>	BHG-6
<b>Purity</b>	Affinity purified
<b>UniProt</b>	O75955
<b>Applications</b>	Western Blot : 1:500-1:2000
<b>Limitations</b>	This Flotillin 1 antibody is available for research use only.



Western blot testing of human HeLa cell lysate with Flotillin 1 antibody. Predicted molecular weight ~49 kDa.

### Description

Flotillin 1 may act as a scaffolding protein within caveolar membranes, functionally participating in formation of caveolae or caveolae-like vesicles. [UniProt]

### Application Notes

Optimal dilution of the Flotillin 1 antibody should be determined by the researcher.

## **Immunogen**

A synthetic peptide specific to human Flotillin 1 / FLOT1 was used as the immunogen for the Flotillin 1 antibody.

## **Storage**

Store the Flotillin 1 antibody at -20oC.