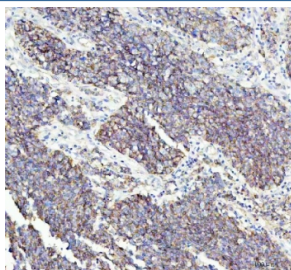


## FLOT1 Antibody / Flotillin 1 [clone BHB-8] (RQ5346)

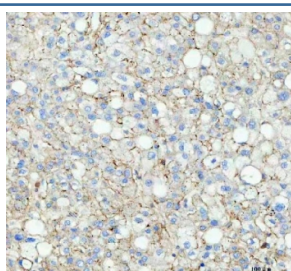
Catalog No.	Formulation	Size
RQ5346	Antibody in PBS with 0.02% sodium azide, 50% glycerol and 0.4-0.5mg/ml BSA	100 ul

[Bulk quote request](#)

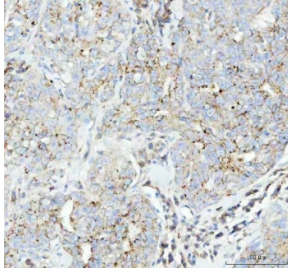
Availability	1-2 weeks
Species Reactivity	Human, Mouse, Rat
Format	Purified
Clonality	Rabbit Monoclonal
Isotype	Rabbit IgG
Clone Name	BHB-8
Purity	Affinity purified
UniProt	O75955
Localization	Cell membrane, cytoplasm
Applications	Western Blot : 1:500-1:2000 Immunohistochemistry (FFPE) : 1:50-1:200
Limitations	This FLOT1 antibody is available for research use only.



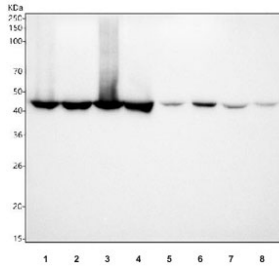
IHC staining of FFPE human lung squamous cell carcinoma tissue with FLOT1 antibody. HIER: boil tissue sections in pH8 EDTA for 10-20 min and allow to cool before testing.



IHC staining of FFPE human liver cancer tissue with FLOT1 antibody. HIER: boil tissue sections in pH8 EDTA for 10-20 min and allow to cool before testing.



IHC staining of FFPE human breast cancer tissue with FLOT1 antibody. HIER: boil tissue sections in pH8 EDTA for 10-20 min and allow to cool before testing.



Western blot testing of 1) human U-2 OS 2) human 293T, 3) human A431, 4) human PC-3, 5) rat brain, 6) rat lung, 7) mouse brain and 8) mouse lung tissue lysate with FLOT1 antibody. Predicted molecular weight ~49 kDa.

## Description

The FLOT1 gene encodes an protein that localizes to the caveolae, which are small domains on the inner cell membranes. This protein plays a role in vesicle trafficking and cell morphology. Alternative splicing results in multiple transcript variants. [RefSeq]

## Application Notes

Optimal dilution of the FLOT1 antibody should be determined by the researcher.

## Immunogen

A synthetic peptide specific to human Flotillin 1 was used as the immunogen for the FLOT1 antibody.

## Storage

Store the FLOT1 antibody at -20oC.