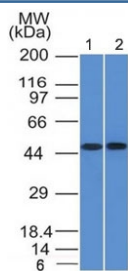


FLI1 Antibody / Friend leukemia integration 1 transcription factor [clone FLI1/1312] (V5576)

Catalog No.	Formulation	Size
V5576-100UG	0.2 mg/ml in 1X PBS with 0.1 mg/ml BSA (US sourced), 0.05% sodium azide	100 ug
V5576-20UG	0.2 mg/ml in 1X PBS with 0.1 mg/ml BSA (US sourced), 0.05% sodium azide	20 ug
V5576SAF-100UG	1 mg/ml in 1X PBS; BSA free, sodium azide free	100 ug

Bulk quote request

Availability	1-3 business days
Species Reactivity	Human
Format	Purified
Host	Mouse
Clonality	Monoclonal (mouse origin)
Isotype	Mouse IgG1, kappa
Clone Name	FLI1/1312
Purity	Protein A/G affinity
UniProt	Q01543
Localization	Nucleus
Applications	Flow Cytometry : 1-2ug/million cells Immunofluorescence : 1-3ug/ml Western Blot : 2-4ug/ml
Limitations	This FLI1 antibody is available for research use only.



Western blot of human 1) THP1 and 2) Raji cell lysate using FLI1 antibody (clone FLI1/1312). Predicted molecular weight ~50 kDa.

Description

Recognizes a protein of 51kDa, which is identified as FLI1. This protein, a member of the ETS family of DNA binding transcription factors, is involved in cellular proliferation and tumorigenesis. Ets-1 is the prototype member of a family of genes identified on the basis of homology to the v-Ets oncogene isolated from the E26 erythroblastosis virus. Members of the Ets gene family share a highly conserved carboxy-terminal domain containing a sequence related to the SV40 large T antigen nuclear localization signal sequence. Approximately 90% of Ewing's Sarcoma (EWS) / Primitive Neuroectodermal Tumors (PNET) have a specific translocation, t(11;22)(q24;q12), which results in fusion of EWS to Fli-1, and production of an EWS-Fli-1 fusion protein. Among normal tissues only endothelial cells and small lymphocytes express Fli-1. This protein is expressed in majority of vascular tumors including angiosarcomas, hemangioendotheliomas, hemangiomas, and Kaposi's Sarcomas. High sensitivity and specificity of Fli-1 equals to or exceeds that of the established vascular markers like CD31, CD34, and Factor VIII.

Explore our [FLI1 Antibody / ETS Transcription Factor Marker page](#) for additional validation data and research applications involving Ewing sarcoma biology, hematopoietic differentiation, endothelial signaling, and ETS family transcriptional regulation pathways.

Application Notes

Optimal dilution of the FLI1 antibody should be determined by the researcher.

Immunogen

A recombinant fragment (amino acids 107-261) of human FLI1 protein with hexa-histidine tag was used as the immunogen for the FLI1 antibody.

Storage

Aliquot the FLI1 antibody and store frozen at -20oC or colder. Avoid repeated freeze-thaw cycles.