

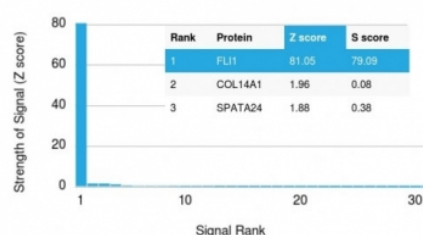
FLI1 Antibody [clone FLI1/3183] (V8430)

Catalog No.	Formulation	Size
V8430-100UG	0.2 mg/ml in 1X PBS with 0.1 mg/ml BSA (US sourced) and 0.05% sodium azide	100 ug
V8430-20UG	0.2 mg/ml in 1X PBS with 0.1 mg/ml BSA (US sourced) and 0.05% sodium azide	20 ug
V8430SAF-100UG	1 mg/ml in 1X PBS; BSA free, sodium azide free	100 ug

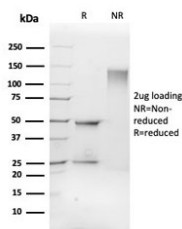
[Bulk quote request](#)

Availability	1-3 business days
Species Reactivity	Human
Format	Purified
Host	Mouse
Clonality	Monoclonal (mouse origin)
Isotype	Mouse IgG1, kappa
Clone Name	FLI1/3183
Purity	Protein G affinity chromatography
UniProt	Q01543
Localization	Nuclear
Applications	ELISA : order Ab without BSA for coating
Limitations	This FLI1 antibody is available for research use only.

Human Protein Microarray Specificity Validation



Analysis of HuProt(TM) microarray containing more than 19,000 full-length human proteins using FLI1 antibody (clone FLI1/3183). These results demonstrate the foremost specificity of the FLI1/3183 mAb. Z- and S- score: The Z-score represents the strength of a signal that an antibody (in combination with a fluorescently-tagged anti-IgG secondary Ab) produces when binding to a particular protein on the HuProt(TM) array. Z-scores are described in units of standard deviations (SD's) above the mean value of all signals generated on that array. If the targets on the HuProt(TM) are arranged in descending order of the Z-score, the S-score is the difference (also in units of SD's) between the Z-scores. The S-score therefore represents the relative target specificity of an Ab to its intended target.



SDS-PAGE analysis of purified, BSA-free FLI1 antibody as confirmation of integrity and purity.

Description

Recognizes a protein of 51kDa, which is identified as FLI1. This protein, a member of the ETS family of DNA binding transcription factors, is involved in cellular proliferation and tumorigenesis. Ets-1 is the prototype member of a family of genes identified on the basis of homology to the v-Ets oncogene isolated from the E26 erythroblastosis virus. Members of the Ets gene family share a highly conserved carboxy-terminal domain containing a sequence related to the SV40 large T antigen nuclear localization signal sequence. Approximately 90% of Ewings Sarcomas. High sensitivity and specificity of Fli-1 equals to or exceeds that of the established vascular markers like CD31, CD34, and Factor VIII.

Application Notes

Optimal dilution of the FLI1 antibody should be determined by the researcher.

Immunogen

A portion of amino acids 107-261 from the human protein was used as the immunogen for the FLI1 antibody.

Storage

Store the FLI1 antibody at 2-8oC (with azide) or aliquot and store at -20oC or colder (without azide).