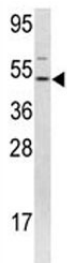


## FLI1 Antibody (F49648)

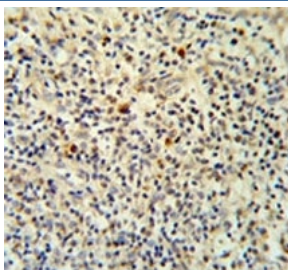
Catalog No.	Formulation	Size
F49648-0.4ML	In 1X PBS, pH 7.4, with 0.09% sodium azide	0.4 ml
F49648-0.08ML	In 1X PBS, pH 7.4, with 0.09% sodium azide	0.08 ml

[Bulk quote request](#)

<b>Availability</b>	1-3 business days
<b>Species Reactivity</b>	Human
<b>Predicted Reactivity</b>	Mouse, Bovine
<b>Format</b>	Purified
<b>Host</b>	Rabbit
<b>Clonality</b>	Polyclonal (rabbit origin)
<b>Isotype</b>	Rabbit Ig
<b>Purity</b>	Purified
<b>UniProt</b>	Q01543
<b>Applications</b>	Western Blot : 1:1000 IHC (Paraffin) : 1:50-1:100
<b>Limitations</b>	This FLI1 antibody is available for research use only.



FLI1 Antibody HEK293 WB. Western blot analysis of FLI1 antibody and 293 lysate.



FLI1 Antibody Tonsil Immunohistochemistry. FLI1 antibody IHC analysis in formalin fixed and paraffin embedded human tonsil tissue.

## Description

FLI1 is a sequence-specific transcriptional activator. It recognizes the DNA sequence 5'-C[CA]GGAAGT-3'.

Explore our [FLI1 Antibody / ETS Transcription Factor Marker page](#) for additional validation data and research applications involving Ewing sarcoma biology, hematopoietic differentiation, endothelial signaling, and ETS family transcriptional regulation pathways.

## Application Notes

Titration of the FLI1 antibody may be required due to differences in protocols and secondary/substrate sensitivity.

## Immunogen

A portion of amino acids 52-80 from the human protein was used as the immunogen for this FLI1 antibody.

## Storage

Aliquot the FLI1 antibody and store frozen at -20oC or colder. Avoid repeated freeze-thaw cycles.