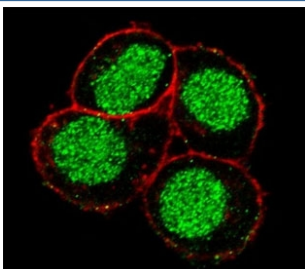


FLI1 Antibody (F49647)

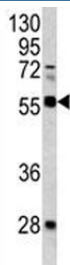
Catalog No.	Formulation	Size
F49647-0.4ML	In 1X PBS, pH 7.4, with 0.09% sodium azide	0.4 ml
F49647-0.08ML	In 1X PBS, pH 7.4, with 0.09% sodium azide	0.08 ml

[Bulk quote request](#)

Availability	1-3 business days
Species Reactivity	Human, Mouse
Predicted Reactivity	Rat, Bovine, Chicken, Zebrafish, Xenopus, Drosophila
Format	Purified
Host	Rabbit
Clonality	Polyclonal (rabbit origin)
Isotype	Rabbit Ig
Purity	Purified
UniProt	Q01543
Applications	Western Blot : 1:1000 Immunofluorescence : 1:10-1:50
Limitations	This FLI1 antibody is available for research use only.



FLI1 Antibody HeLa IF. Confocal immunofluorescent analysis of FLI1 antibody with HeLa cells followed by Alexa Fluor 488-conjugated goat anti-rabbit IgG (green). Actin filaments have been labeled with Alexa Fluor 555 Phalloidin (red).



FLI1 Antibody Mouse Lung WB. Western blot analysis of FLI1 antibody and mouse lung tissue lysate.

Description

FLI1 is a sequence-specific transcriptional activator. It recognizes the DNA sequence 5'-C[CA]GGAAGT-3'.

Explore our [FLI1 Antibody / ETS Transcription Factor Marker page](#) for additional validation data and research applications involving Ewing sarcoma biology, hematopoietic differentiation, endothelial signaling, and ETS family transcriptional regulation pathways.

Application Notes

Titration of the FLI1 antibody may be required due to differences in protocols and secondary/substrate sensitivity.

Immunogen

A portion of amino acids 299-328 from the human protein was used as the immunogen for this FLI1 antibody.

Storage

Aliquot the FLI1 antibody and store frozen at -20oC or colder. Avoid repeated freeze-thaw cycles.