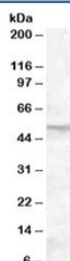


FKBP52 Antibody (R33471)

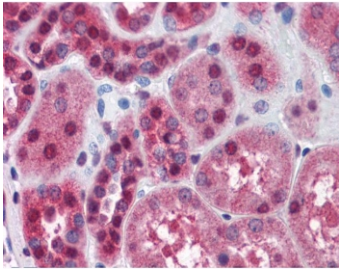
Catalog No.	Formulation	Size
R33471-100UG	0.5 mg/ml in 1X TBS, pH7.3, with 0.5% BSA (US sourced) and 0.02% sodium azide	100 ug

[Bulk quote request](#)

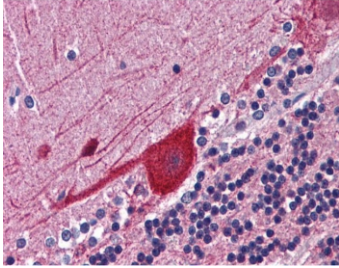
Availability	1-3 business days
Species Reactivity	Human
Format	Antigen affinity purified
Host	Goat
Clonality	Polyclonal (goat origin)
Isotype	Goat Ig
Purity	Antigen affinity
Gene ID	2288
Localization	Cytoplasmic, nuclear
Applications	Western Blot : 0.01-0.03ug/ml IHC (FFPE) : 3.75ug/ml ELISA (peptide) LOD : 1:8000
Limitations	This FKBP52 antibody is available for research use only.



Western blot testing of human placenta lysate with FKBP52 antibody at 0.01ug/ml.
Predicted/observed molecular weight: ~52/52-59 kDa.



IHC testing of FFPE human kidney tissue with FKBP52 antibody at 3.75ug/ml. Required HIER: steamed antigen retrieval with pH6 citrate buffer; AP-staining.



IHC testing of FFPE human cerebellum tissue with FKBP52 antibody at 3.75ug/ml. Required HIER: steamed antigen retrieval with pH6 citrate buffer; AP-staining.

Description

Additional name(s) for this target protein: FK506 binding protein 4; FKBP4

Application Notes

Optimal dilution of the FKBP52 antibody should be determined by the researcher.

Immunogen

Amino acids DHPTDTEMKEEQKSN were used as the immunogen for this FKBP52 antibody.

Storage

Aliquot and store the FKBP52 antibody at -20oC.