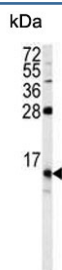


FKBP1B Antibody (F54955)

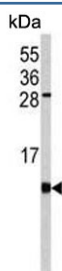
Catalog No.	Formulation	Size
F54955-0.4ML	In 1X PBS, pH 7.4, with 0.09% sodium azide	0.4 ml
F54955-0.08ML	In 1X PBS, pH 7.4, with 0.09% sodium azide	0.08 ml

[Bulk quote request](#)

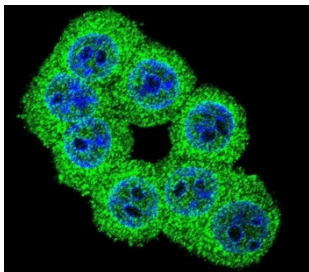
Availability	1-3 business days
Species Reactivity	Human, Mouse
Format	Purified
Clonality	Polyclonal (rabbit origin)
Isotype	Rabbit Ig
Purity	Purified
UniProt	P68106
Applications	Immunofluorescence : 1:10-1:50 Immunohistochemistry (FFPE) : 1:10-1:50 Western Blot : 1:500-1:1000
Limitations	This FKBP1B antibody is available for research use only.



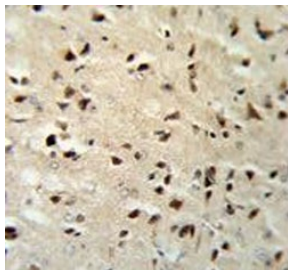
Western blot testing of human HEK293 cell lysate with FKBP1B antibody. Predicted molecular weight ~12 kDa.



Western blot testing of mouse cerebellum tissue lysate with FKBP1B antibody. Predicted molecular weight ~12 kDa.



Immunofluorescent staining of human HEK293 cells with FKBP1B antibody (green) and DAPI nuclear stain (blue).



IHC testing of FFPE mouse brain tissue with FKBP1B antibody. HIER: steam section in pH6 citrate buffer for 20 min and allow to cool prior to staining.

Description

FKBP1B is a member of the immunophilin protein family, which play a role in immunoregulation and basic cellular processes involving protein folding and trafficking. This protein is a cis-trans prolyl isomerase that binds the immunosuppressants FK506 and rapamycin. The protein is highly similar to the FK506-binding protein 1A. Its physiological role is thought to be in excitation-contraction coupling in cardiac muscle.

Application Notes

The stated application concentrations are suggested starting points. Titration of the FKBP1B antibody may be required due to differences in protocols and secondary/substrate sensitivity.

Immunogen

A portion of amino acids 16-46 from the human protein was used as the immunogen for the FKBP1B antibody.

Storage

Aliquot the FKBP1B antibody and store frozen at -20oC or colder. Avoid repeated freeze-thaw cycles.