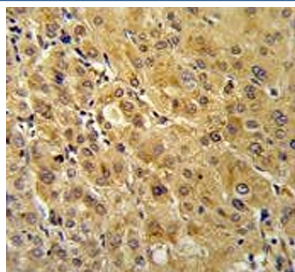


FKBP1A Antibody / FKBP12 (F54946)

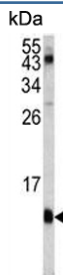
Catalog No.	Formulation	Size
F54946-0.4ML	In 1X PBS, pH 7.4, with 0.09% sodium azide	0.4 ml
F54946-0.08ML	In 1X PBS, pH 7.4, with 0.09% sodium azide	0.08 ml

[Bulk quote request](#)

Availability	1-3 business days
Species Reactivity	Human
Format	Purified
Host	Rabbit
Clonality	Polyclonal (rabbit origin)
Isotype	Rabbit Ig
Purity	Purified
UniProt	P62942
Localization	Cytoplasmic
Applications	Flow Cytometry : 1:10-1:50 (1x10 ⁶ cells) Western Blot : 1:500-1:1000 Immunohistochemistry (FFPE) : 1:50-1:100
Limitations	This FKBP1A antibody is available for research use only.



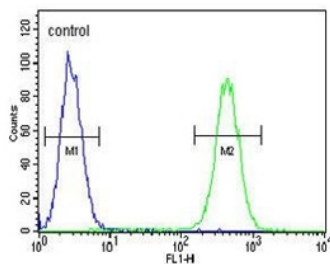
IHC testing of FFPE human hepatocellular carcinoma tissue with FKBP1A antibody.
HIER: steam section in pH6 citrate buffer for 20 min and allow to cool prior to staining.



Western blot testing of human Jurkat cell lysate with FKBP1A antibody. Predicted molecular weight ~12 kDa.



Western blot testing of 1) non-transfected and 2) transfected 293 cell lysate with FKBP1A antibody.



Flow cytometry testing of human MDA-MB-231 cells with FKBP1A antibody; Blue=isotype control, Green= FKBP1A antibody.

Description

FKBP12 is a member of the immunophilin protein family, which play a role in immunoregulation and basic cellular processes involving protein folding and trafficking. The protein is a cis-trans prolyl isomerase that binds the immunosuppressants FK506 and rapamycin. It interacts with several intracellular signal transduction proteins including type I TGF-beta receptor. It also interacts with multiple intracellular calcium release channels, and coordinates multi-protein complex formation of the tetrameric skeletal muscle ryanodine receptor. In mouse, deletion of this homologous gene causes congenital heart disorder known as noncompaction of left ventricular myocardium.

Application Notes

The stated application concentrations are suggested starting points. Titration of the FKBP1A antibody may be required due to differences in protocols and secondary/substrate sensitivity.

Immunogen

A portion of amino acids 55-83 from the human protein was used as the immunogen for the FKBP1A antibody.

Storage

Aliquot the FKBP1A antibody and store frozen at -20°C or colder. Avoid repeated freeze-thaw cycles.

