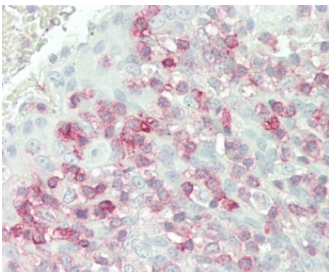


FKBP10 Antibody (F54923)

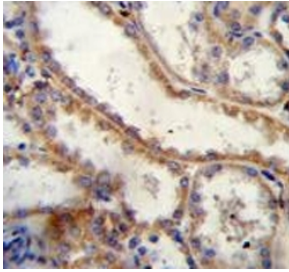
Catalog No.	Formulation	Size
F54923-0.4ML	In 1X PBS, pH 7.4, with 0.09% sodium azide	0.4 ml
F54923-0.08ML	In 1X PBS, pH 7.4, with 0.09% sodium azide	0.08 ml

[Bulk quote request](#)

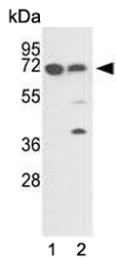
Availability	1-3 business days
Species Reactivity	Human
Format	Purified
Host	Rabbit
Clonality	Polyclonal (rabbit origin)
Isotype	Rabbit Ig
Purity	Purified
UniProt	Q96AY3
Localization	Cytoplasmic
Applications	Flow Cytometry : 1:10-1:50 (1x10e6 cells) Immunohistochemistry (FFPE) : 1:50-1:100 Western Blot : 1:500-1:1000
Limitations	This FKBP10 antibody is available for research use only.



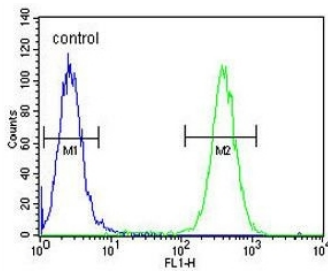
IHC testing of FFPE human tonsil tissue with FKBP10 antibody. HIER: steam section in pH6 citrate buffer for 20 min and allow to cool prior to staining.



IHC testing of FFPE human kidney tissue with FKBP10 antibody. HIER: steam section in pH6 citrate buffer for 20 min and allow to cool prior to staining.



Western blot testing of human 1) A2058 and 2) A375 cell lysate with FKBP10 antibody. Expected molecular weight: 64-78 kDa.



Flow cytometry testing of human A2058 cells with FKBP10 antibody; Blue=isotype control, Green= FKBP10 antibody.

Description

The protein belongs to the FKBP-type peptidyl-prolyl cis/trans isomerase family. It is located in endoplasmic reticulum and acts as molecular chaperones.

Application Notes

The stated application concentrations are suggested starting points. Titration of the FKBP10 antibody may be required due to differences in protocols and secondary/substrate sensitivity.

Immunogen

A portion of amino acids 552-580 from the human protein was used as the immunogen for the FKBP10 antibody.

Storage

Aliquot the FKBP10 antibody and store frozen at -20°C or colder. Avoid repeated freeze-thaw cycles.