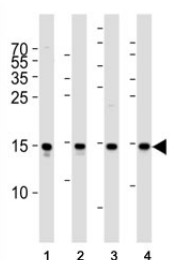


FIS1 Antibody / TTC11 (F52637)

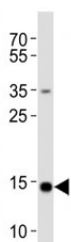
Catalog No.	Formulation	Size
F52637-0.4ML	In 1X PBS, pH 7.4, with 0.09% sodium azide	0.4 ml
F52637-0.08ML	In 1X PBS, pH 7.4, with 0.09% sodium azide	0.08 ml

[Bulk quote request](#)

Availability	1-3 business days
Species Reactivity	Human, Mouse, Rat
Format	Antigen affinity purified
Clonality	Polyclonal (rabbit origin)
Isotype	Rabbit Ig
Purity	Antigen affinity
UniProt	Q9Y3D6
Applications	Western Blot : 1:1000
Limitations	This FIS1 antibody is available for research use only.



Western blot analysis of lysate from (1) Raji cell line, (2) human spleen, (3) mouse brain and (4) rat brain tissue lysate using FIS1 antibody at 1:1000.



Western blot analysis of lysate from HeLa cell line using FIS1 antibody diluted at 1:1000.

Description

Involved in the fragmentation of the mitochondrial network and its perinuclear clustering. Plays a minor role in the recruitment and association of the fission mediator dynamin- related protein 1 (DNM1L) to the mitochondrial surface and mitochondrial fission. Can induce cytochrome c release from the mitochondrion to the cytosol, ultimately leading to apoptosis. Also mediates peroxisomal fission.

Application Notes

Titration of the FIS1 antibody may be required due to differences in protocols and secondary/substrate sensitivity.

Immunogen

This FIS1 antibody was produced from a rabbit immunized with a KLH conjugated synthetic peptide between 6-40 amino acids from the N-terminal region of human FIS1.

Storage

Aliquot the FIS1 antibody and store frozen at -20oC or colder. Avoid repeated freeze-thaw cycles.