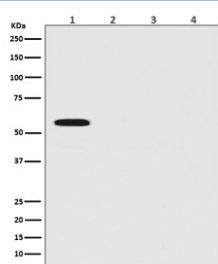


Firefly Luciferase Antibody [clone DAB-6] (RQ5248)

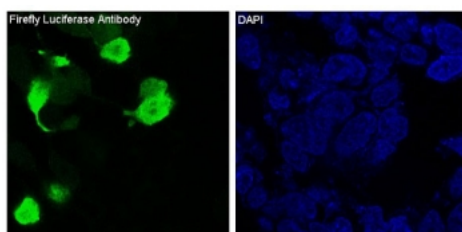
| Catalog No. | Formulation | Size |
|-------------|--|--------|
| RQ5248 | Antibody in PBS with 0.02% sodium azide, 50% glycerol and 0.4-0.5mg/ml BSA | 100 ul |

[Bulk quote request](#)

| | |
|--------------------|--|
| Availability | 1-2 weeks |
| Species Reactivity | Firefly luciferase |
| Format | Purified |
| Clonality | Rabbit Monoclonal |
| Isotype | Rabbit IgG |
| Clone Name | DAB-6 |
| Purity | Affinity purified |
| UniProt | P08659 |
| Applications | Western Blot : 1:1000-1:5000 Immunofluorescence : 1:50-1:200 |
| Limitations | This Firefly Luciferase antibody is available for research use only. |



Western blot testing of 1) 293T cells transfected with firefly luciferase, 2) human HeLa, 3) mouse NIH3T3 and 4) rat C6 lysate with Firefly Luciferase antibody. Predicted molecular weight ~60 kDa.



Immunofluorescent staining of transfected Firefly Luciferase-293 cells with Firefly Luciferase antibody (green) and DAPI (blue).

Description

Firefly luciferase is the light-emitting enzyme responsible for the bioluminescence of fireflies and click beetles. The enzyme catalyses the oxidation of firefly luciferin, requiring oxygen and ATP. Because of the requirement of ATP, firefly luciferases have been used extensively in biotechnology. [Wiki]

Application Notes

Optimal dilution of the Firefly Luciferase antibody should be determined by the researcher.

Immunogen

A synthetic peptide specific to Firefly Luciferase was used as the immunogen for the Firefly Luciferase antibody.

Storage

Store the Firefly Luciferase antibody at -20oC.