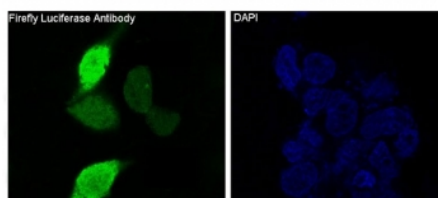


Firefly Luciferase Antibody [clone DAA-6] (RQ5246)

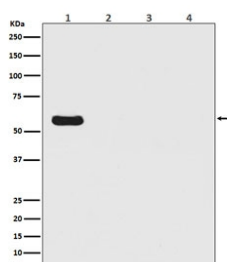
Catalog No.	Formulation	Size
RQ5246	Antibody in PBS with 0.02% sodium azide, 50% glycerol and 0.4-0.5mg/ml BSA	100 ul

[Bulk quote request](#)

Availability	1-2 weeks
Species Reactivity	Firefly luciferase
Format	Purified
Clonality	Rabbit Monoclonal
Isotype	Rabbit IgG
Clone Name	DAA-6
Purity	Affinity purified
UniProt	P08659, V9VFW4
Applications	Western Blot : 1:500-1:2000 Immunofluorescence : 1-50-1:200
Limitations	This Firefly Luciferase antibody is available for research use only.



Immunofluorescent staining of human 293 cells transfected with Firefly Luciferase using Firefly Luciferase antibody (green) and DAPI nuclear stain (blue).



Western blot testing of 1) 293T cells transfected with firefly luciferase, 2) human HeLa, 3) mouse NIH3T3 and 4) rat C6 lysate with Firefly Luciferase antibody. Predicted molecular weight ~60 kDa.

Description

Firefly luciferase is the light-emitting enzyme responsible for the bioluminescence of fireflies and click beetles. The enzyme catalyses the oxidation of firefly luciferin, requiring oxygen and ATP. Because of the requirement of ATP, firefly luciferases have been used extensively in biotechnology. [Wiki]

Application Notes

Optimal dilution of the Firefly Luciferase antibody should be determined by the researcher.

Immunogen

A synthetic peptide specific to Firefly Luciferase was used as the immunogen for the Firefly Luciferase antibody.

Storage

Store the Firefly Luciferase antibody at -20oC.