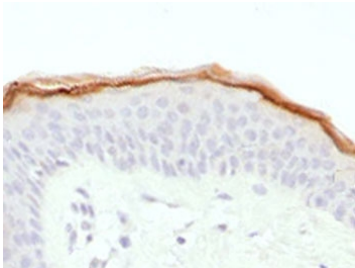


## Filaggrin Antibody [clone FLG1-1] (V3861)

| Catalog No.    | Formulation  | Size   |
|----------------|--|--------|
| V3861-100UG    | 0.2 mg/ml in 1X PBS with 0.1 mg/ml BSA (US sourced) and 0.05% sodium azide | 100 ug |
| V3861-20UG     | 0.2 mg/ml in 1X PBS with 0.1 mg/ml BSA (US sourced) and 0.05% sodium azide | 20 ug  |
| V3861SAF-100UG | 1 mg/ml in 1X PBS; BSA free, sodium azide free                             | 100 ug |

### Bulk quote request

|                           |   |
|---------------------------|---|
| <b>Availability</b>       | 1-3 business days   |
| <b>Species Reactivity</b> | Human   |
| <b>Format</b>             | Purified  |
| <b>Host</b>               | Mouse   |
| <b>Clonality</b>          | Monoclonal (mouse origin)                                   |
| <b>Isotype</b>            | Mouse IgG2b, kappa  |
| <b>Clone Name</b>         | FLG1-1  |
| <b>Purity</b>             | Protein G affinity chromatography                           |
| <b>UniProt</b>            | P20930  |
| <b>Localization</b>       | Cytoplasmic   |
| <b>Applications</b>       | Immunohistochemistry (FFPE) : 1-2ug/ml for 30 min at RT     |
| <b>Limitations</b>        | This Filaggrin antibody is available for research use only. |



IHC testing of FFPE human skin with Filaggrin antibody (clone FLG1-1). Required HIER: boil tissue sections in pH 9 10mM Tris with 1mM EDTA for 10-20 min.

## Description

Filaggrin (FLG) aggregates keratin intermediate filaments and promotes disulfide-bond formation among the intermediate filaments during terminal differentiation of mammalian epidermis. [UniProt]

Explore our [Filaggrin Antibody / Epidermal Differentiation Marker page](#) for additional validation data and research applications involving keratinocyte maturation, epithelial barrier biology, and dermatopathology-associated signaling pathways.

## Application Notes

The stated application concentrations are suggested starting points. Titration of the Filaggrin antibody may be required due to differences in protocols and secondary/substrate sensitivity.

## Immunogen

A portion of amino acids 998-1104 from the human protein were used as the immunogen for this Filaggrin antibody.

## Storage

Store the Filaggrin antibody at 2-8oC (with azide) or aliquot and store at -20oC or colder (without azide).