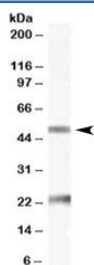


## Fibulin 5 Antibody (R35708)

Catalog No.	Formulation	Size
R35708-100UG	0.5 mg/ml in 1X TBS, pH7.3, with 0.5% BSA (US sourced) and 0.02% sodium azide	100 ug

[Bulk quote request](#)

Availability	1-3 business days
Species Reactivity	Human
Predicted Reactivity	Dog, Mouse, Rat
Format	Antigen affinity purified
Host	Goat
Clonality	Polyclonal (goat origin)
Isotype	Goat Ig
Purity	Antigen affinity
Gene ID	10516
Applications	Western Blot : 0.1-0.3ug/ml ELISA (peptide) LOD : 1:32000
Limitations	This Fibulin 5 antibody is available for research use only.



Western blot testing of human ovary lysate with Fibulin 5 antibody at 0.1ug/ml. The expected ~50kDa band and the additional ~23kDa band are both blocked by the immunizing peptide.

## Description

Additional name(s) for this target protein: FBLN5, ARMD3, DANCE, EVEC

## Application Notes

Optimal dilution of the Fibulin 5 antibody should be determined by the researcher.

## Immunogen

Amino acids RPIKGPREIQLDLE were used as the immunogen for this Fibulin 5 antibody.

## Storage

Aliquot and store the Fibulin 5 antibody at -20oC.