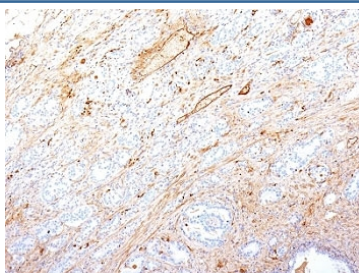


Fibronectin Antibody [clone SPM246] (V9021)

Catalog No.	Formulation	Size
V9021-100UG	0.2 mg/ml in 1X PBS with 0.1 mg/ml BSA (US sourced) and 0.05% sodium azide	100 ug
V9021-20UG	0.2 mg/ml in 1X PBS with 0.1 mg/ml BSA (US sourced) and 0.05% sodium azide	20 ug
V9021SAF-100UG	1 mg/ml in 1X PBS; BSA free, sodium azide free	100 ug

[Bulk quote request](#)

Availability	1-3 business days
Species Reactivity	Human
Format	Purified
Host	Mouse
Clonality	Monoclonal (mouse origin)
Isotype	Mouse IgG1, kappa
Clone Name	SPM246
Purity	Protein G affinity chromatography
UniProt	P02751
Localization	Connective tissue matrix
Applications	Immunohistochemistry (FFPE) : 1-2ug/ml for 30 min at RT
Limitations	This Fibronectin antibody is available for research use only.



IHC: Formalin-fixed, paraffin-embedded human pancreatic adenocarcinoma stained with Fibronectin antibody (SPM246).

Description

Fibronectin is a soluble dimeric glycoprotein of 440kDa, which is present in cells, extracellular matrix, and blood. This mAb reacts with the cellular as well as plasma form of fibronectin. Reportedly, after iv administration, this mAb localizes to tumor vessels where it binds to the underlying basement. Epitope recognized by this antibody is not accessible in normal tissues to the circulating mAb indicating that it can be used to specifically target tumor vessels in vivo.

Application Notes

The optimal dilution of the Fibronectin antibody for each application should be determined by the researcher.

1. Staining of formalin-fixed tissues requires boiling tissue sections in 10mM Tris with 1mM EDTA, pH 9 for 10-20 min followed by cooling at RT for 20 minutes.

Immunogen

A T-lymphoma biopsy was used as the immunogen for this Fibronectin antibody.

Storage

Store the Fibronectin antibody at 2-8oC (with azide) or aliquot and store at -20oC or colder (without azide).