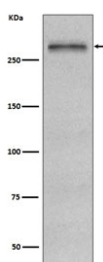


Fibronectin Antibody [clone EID-6] (RQ5007)

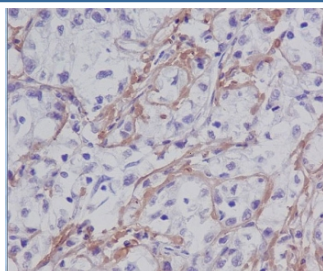
| Catalog No. | Formulation | Size |
|-------------|--|--------|
| RQ5007 | Antibody in PBS with 0.02% sodium azide, 50% glycerol and 0.4-0.5mg/ml BSA | 100 ul |

[Bulk quote request](#)

| | |
|--------------------|---|
| Availability | 1-2 weeks |
| Species Reactivity | Human |
| Format | Purified |
| Clonality | Rabbit Monoclonal |
| Isotype | Rabbit IgG |
| Clone Name | EID-6 |
| Purity | Affinity purified |
| UniProt | P02751 |
| Applications | Western Blot : 1:500-1:2000 Immunohistochemistry (FFPE) : 1:50-1:200 |
| Limitations | This Fibronectin antibody is available for research use only. |



Western blot testing of human HepG2 cell lysate with Fibronectin antibody. Predicted molecular weight ~220 kDa (monomer) but may be observed at a higher molecular weight due to glycosylation.



IHC staining of FFPE human liver cancer tissue with Fibronectin antibody. HIER: boil tissue sections in pH8 EDTA for 20 min and allow to cool before testing.

Description

Fibronectins bind cell surfaces and various compounds including collagen, fibrin, heparin, DNA, and actin. Fibronectins are involved in cell adhesion, cell motility, opsonization, wound healing, and maintenance of cell shape. [UniProt]

Application Notes

Optimal dilution of the Fibronectin antibody should be determined by the researcher.

Immunogen

A synthetic peptide specific to human Fibronectin / FN1 was used as the immunogen for the Fibronectin antibody.

Storage

Store the Fibronectin antibody at -20oC.