

Fibronectin Antibody [clone 616] (V7408)

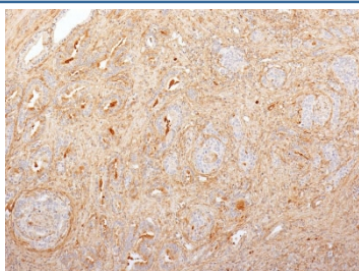
Catalog No.	Formulation	Size
V7408-100UG	0.2 mg/ml in 1X PBS with 0.1 mg/ml BSA (US sourced) and 0.05% sodium azide	100 ug
V7408-20UG	0.2 mg/ml in 1X PBS with 0.1 mg/ml BSA (US sourced) and 0.05% sodium azide	20 ug
V7408SAF-100UG	1 mg/ml in 1X PBS; BSA free, sodium azide free	100 ug
V7408IHC-7ML	Prediluted in 1X PBS with 0.1 mg/ml BSA (US sourced) and 0.05% sodium azide; *For IHC use only*	7 ml



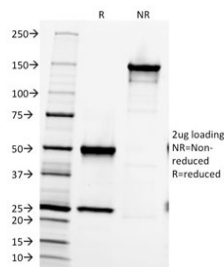
Citations (2)

[Bulk quote request](#)

Availability	1-2 business days
Species Reactivity	Human
Format	Purified
Clonality	Monoclonal (mouse origin)
Isotype	Mouse IgG2a, kappa
Clone Name	616
Purity	Protein G affinity chromatography
UniProt	P02751
Localization	Connective tissue matrix
Applications	Immunohistochemistry (FFPE) : 1-2ug/ml for 30 min at RT Prediluted IHC Only Format : incubate for 30 min at RT (1)
Limitations	This Fibronectin antibody is available for research use only.



IHC staining of FFPE human prostate carcinoma with Fibronectin antibody (clone 616).
HIER: boil tissue sections in 10mM Tris with 1mM EDTA, pH 9, for 10-20 min followed by cooling prior to testing.



SDS-PAGE analysis of purified, BSA-free Fibronectin antibody (clone 616) as confirmation of integrity and purity.

Description

Fibronectins are disulfide-linked, dimeric glycoproteins of ~440kDa. They possess at least four binding sites for collagen, glycosaminoglycans, transglutaminase, and a cell surface receptor. Fibronectins are involved in cell adhesion, tissue organization, and wound healing. Fibronectins are present in basement membranes, interstitial connective tissue matrix, and blood. Cellular fibronectin is widely distributed in the stroma of many malignant tumors. This mAb does not cross-react with MMP-2, MMP-9, or TIMP-2.

Application Notes

Optimal dilution of the Fibronectin antibody should be determined by the researcher.

1.The prediluted format is supplied in a dropper bottle and is optimized for use in IHC. After epitope retrieval step (if required), drip mAb solution onto the tissue section and incubate at RT for 30 min.

Immunogen

High molecular weight proteins secreted by cultivated human fibroblasts were used as the immunogen for the Fibronectin antibody. The epitope of this mAb is located in the 29kDa N-terminal fibrin- and heparin-binding domain of fibronectin.

Storage

Store the Fibronectin antibody at 2-8oC (with azide) or aliquot and store at -20oC or colder (without azide).