

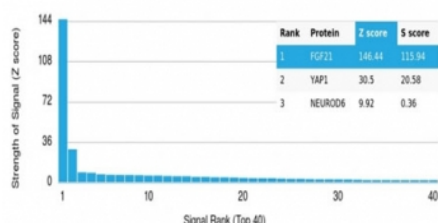
Fibroblast Growth Factor 21 Antibody / FGF21 [clone FGF21/4343] (V9462)

Catalog No.	Formulation	Size
V9462-100UG	0.2 mg/ml in 1X PBS with 0.1 mg/ml BSA (US sourced), 0.05% sodium azide	100 ug
V9462-20UG	0.2 mg/ml in 1X PBS with 0.1 mg/ml BSA (US sourced), 0.05% sodium azide	20 ug
V9462SAF-100UG	1 mg/ml in 1X PBS; BSA free, sodium azide free	100 ug

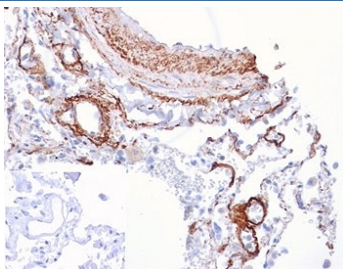
[Bulk quote request](#)

Availability	1-3 business days
Species Reactivity	Human
Format	Purified
Clonality	Monoclonal (mouse origin)
Isotype	Mouse IgG1, kappa
Clone Name	FGF21/4343
Purity	Protein A/G affinity
UniProt	Q9NSA1
Localization	Secreted (extracellular)
Applications	Immunohistochemistry (FFPE) : 1-2ug/ml
Limitations	This Fibroblast Growth Factor 21 antibody is available for research use only.

Human Protein Microarray Specificity Validation



Analysis of HuProt(TM) microarray containing more than 19,000 full-length human proteins using Fibroblast Growth Factor 21 antibody (clone FGF21/4343). These results demonstrate the foremost specificity of the FGF21/4343 mAb. Z- and S- score: The Z-score represents the strength of a signal that an antibody (in combination with a fluorescently-tagged anti-IgG secondary Ab) produces when binding to a particular protein on the HuProt(TM) array. Z-scores are described in units of standard deviations (SD's) above the mean value of all signals generated on that array. If the targets on the HuProt(TM) are arranged in descending order of the Z-score, the S-score is the difference (also in units of SD's) between the Z-scores. The S-score therefore represents the relative target specificity of an Ab to its intended target.



IHC staining of FFPE human lung tissue with Fibroblast Growth Factor 21 antibody (clone FGF21/4343). Negative control inset: PBS instead of primary antibody to control for secondary binding. HIER: boil tissue sections in pH 9 10mM Tris with 1mM EDTA for 20 min and allow to cool before testing.

Description

Fibroblast growth factor 21 is a protein that in humans is encoded by the FGF21 gene, a member of the fibroblast growth factor (FGF) family. FGF21 stimulates glucose uptake in adipocytes but not in other cell types.

Application Notes

Optimal dilution of the Fibroblast Growth Factor 21 antibody should be determined by the researcher.

Immunogen

A portion of amino acids 91-209 was used as the immunogen for the Fibroblast Growth Factor 21 antibody.

Storage

Aliquot the Fibroblast Growth Factor 21 antibody and store frozen at -20°C or colder. Avoid repeated freeze-thaw cycles.