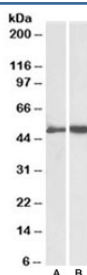


Fibrinogen gamma chain Antibody (R35217)

Catalog No.	Formulation	Size
R35217-100UG	0.5 mg/ml in 1X TBS, pH7.3, with 0.5% BSA (US sourced) and 0.02% sodium azide	100 ug

[Bulk quote request](#)

Availability	1-3 business days
Species Reactivity	Human
Format	Antigen affinity purified
Clonality	Polyclonal (goat origin)
Isotype	Goat Ig
Purity	Antigen affinity
Gene ID	2266
Applications	Western Blot : 0.1-0.3ug/ml ELISA (peptide) LOD : 1:64000
Limitations	This Fibrinogen gamma chain antibody is available for research use only.



Western blot testing of human plasma [A] and platelet [B] lysates with Fibrinogen gamma chain antibody at 0.1ug/ml. Predicted molecular weight ~50kDa.

Description

Additional name(s) for this target protein: FGG

Application Notes

Optimal dilution of the Fibrinogen gamma chain antibody should be determined by the researcher.

Immunogen

Amino acids QDIANKGAKQS were used as the immunogen for this Fibrinogen gamma chain antibody.

Storage

Aliquot and store the Fibrinogen gamma chain antibody at -20oC.