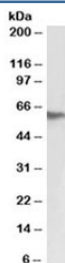


Fibrinogen beta chain Antibody (R35767)

Catalog No.	Formulation	Size
R35767-100UG	0.5 mg/ml in 1X TBS, pH7.3, with 0.5% BSA (US sourced) and 0.02% sodium azide	100 ug

[Bulk quote request](#)

Availability	1-3 business days
Species Reactivity	Human
Predicted Reactivity	Dog
Format	Antigen affinity purified
Host	Goat
Clonality	Polyclonal (goat origin)
Isotype	Goat Ig
Purity	Antigen affinity
Gene ID	2244
Applications	Western Blot : 0.3-1ug/ml ELISA (peptide) LOD : 1:128000
Limitations	This Fibrinogen beta chain antibody is available for research use only.



Western blot testing of human liver lysate with Fibrinogen beta chain antibody at 0.3ug/ml. Predicted molecular weight ~56kDa.

Description

Additional name(s) for this target protein: FGB

Application Notes

Optimal dilution of the Fibrinogen beta chain antibody should be determined by the researcher.

Immunogen

Amino acids RSKIQKLESDVSAQ were used as the immunogen for this Fibrinogen beta chain antibody.

Storage

Aliquot and store the Fibrinogen beta chain antibody at -20oC.