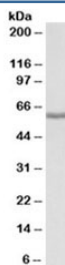


## Fibrinogen beta chain Antibody (R33828)

Catalog No.	Formulation	Size
R33828-100UG	0.5 mg/ml in 1X TBS, pH7.3, with 0.5% BSA (US sourced) and 0.02% sodium azide	100 ug

[Bulk quote request](#)

Availability	1-3 business days
Species Reactivity	Human
Predicted Reactivity	Pig
Format	Antigen affinity purified
Host	Goat
Clonality	Polyclonal (goat origin)
Isotype	Goat Ig
Purity	Antigen affinity
Gene ID	2244
Applications	Western Blot : 0.01-0.03ug/ml ELISA (peptide) LOD : 1:128000
Limitations	This Fibrinogen beta chain antibody is available for research use only.



Western blot testing of human liver lysate with Fibrinogen beta chain antibody at 0.01ug/ml. Predicted molecular weight ~56kDa.

### Description

Additional name(s) for this target protein: Fibrinogen-b; FGB

### Application Notes

Optimal dilution of the Fibrinogen beta chain antibody should be determined by the researcher.

## Immunogen

Amino acids EKHQLYIDETVNSN were used as the immunogen for this Fibrinogen beta chain antibody.

## Storage

Aliquot and store the Fibrinogen beta chain antibody at -20oC.