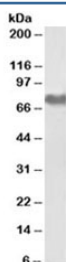


Fibrinogen Antibody (alpha chain) (R35567)

Catalog No.	Formulation	Size
R35567-100UG	0.5 mg/ml in 1X TBS, pH7.3, with 0.5% BSA (US sourced) and 0.02% sodium azide	100 ug

[Bulk quote request](#)

Availability	1-3 business days
Species Reactivity	Human
Format	Antigen affinity purified
Host	Goat
Clonality	Polyclonal (goat origin)
Isotype	Goat Ig
Purity	Antigen affinity
Gene ID	2243
Applications	Western Blot : 0.01-0.03ug/ml ELISA (peptide) LOD : 1:64000
Limitations	This Fibrinogen antibody is available for research use only.



Western blot testing of human platelet lysate with Fibrinogen antibody at 0.01ug/ml.
Predicted molecular weight ~70 kDa (alpha isoform), ~95 kDa (alpha-E isoform).

Description

Additional name(s) for this target protein: Fibrinogen alpha chain, FGA, Fib2

Application Notes

Optimal dilution of the Fibrinogen antibody should be determined by the researcher.

Immunogen

Amino acids RDNTYNRVSEDLR from the alpha chain were used as the immunogen for this Fibrinogen antibody. This sequence is common to the alpha and alpha-E isoforms.

Storage

Aliquot and store the Fibrinogen antibody at -20oC.