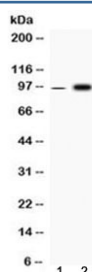


Fibrinogen alpha chain Antibody / FGA (R32595)

Catalog No.	Formulation	Size
R32595	0.5mg/ml if reconstituted with 0.2ml sterile DI water	100 ug

Bulk quote request

Availability	1-3 business days
Species Reactivity	Human, Rat
Predicted Reactivity	Mouse
Format	Antigen affinity purified
Host	Rabbit
Clonality	Polyclonal (rabbit origin)
Isotype	Rabbit IgG
Purity	Antigen affinity
Buffer	Lyophilized from 1X PBS with 2.5% BSA and 0.025% sodium azide
UniProt	P02671
Localization	Secreted
Applications	Western Blot : 0.5-1ug/ml
Limitations	This Fibrinogen alpha chain antibody is available for research use only.



Western blot testing of 1) rat skeletal muscle and 2) human HepG2 cell lysate with Fibrinogen alpha chain antibody at 0.5ug/ml. Predicted molecular weight ~95 kDa (alpha-E isoform).

Description

Fibrinogen alpha chain is a protein that in humans is encoded by the FGA gene. This gene encodes the alpha subunit of the coagulation factor fibrinogen, which is a component of the blood clot. Following vascular injury, the encoded preproprotein is proteolytically processed by thrombin during the conversion of fibrinogen to fibrin. Mutations in this gene

lead to several disorders, including dysfibrinogenemia, hypofibrinogenemia, afibrinogenemia and renal amyloidosis. Alternative splicing results in multiple transcript variants, at least one of which encodes an isoform that undergoes proteolytic processing.

Application Notes

Optimal dilution of the Fibrinogen alpha chain antibody should be determined by the researcher.

Immunogen

Amino acids 687-727 (RTWQDYKRGFGSLNDEGEGEFWLGNDYLHLLTQRGSVLRVE-human) were used as the immunogen for the Fibrinogen alpha chain antibody. This sequence is specific to the alpha-E isoform and not found in the alpha isoform.

Storage

After reconstitution, the Fibrinogen alpha chain antibody can be stored for up to one month at 4oC. For long-term, aliquot and store at -20oC. Avoid repeated freezing and thawing.