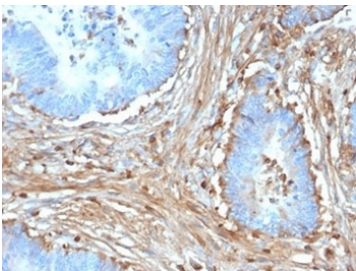


Fibrillin-1 Antibody / FBN1 [clone FBN1/6933] (V4002)

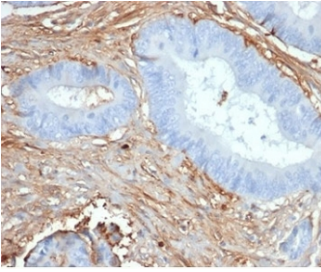
Catalog No.	Formulation	Size
V4002-100UG	0.2 mg/ml in 1X PBS with 0.1 mg/ml BSA (US sourced), 0.05% sodium azide	100 ug
V4002-20UG	0.2 mg/ml in 1X PBS with 0.1 mg/ml BSA (US sourced), 0.05% sodium azide	20 ug
V4002SAF-100UG	1 mg/ml in 1X PBS; BSA free, sodium azide free	100 ug

[Bulk quote request](#)

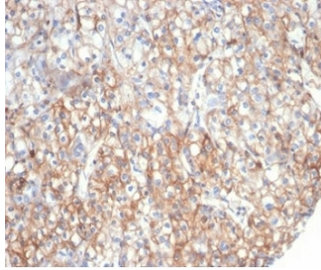
Availability	1-3 business days
Species Reactivity	Human
Format	Purified
Host	Mouse
Clonality	Monoclonal (mouse origin)
Isotype	Mouse IgG1, kappa
Clone Name	FBN1/6933
Purity	Protein A/G affinity
UniProt	P35555
Localization	Extracellular matrix
Applications	ELISA : order antibody without BSA for coating Immunohistochemistry (FFPE) : 1-2ug/ml
Limitations	This Fibrillin-1 antibody is available for research use only.



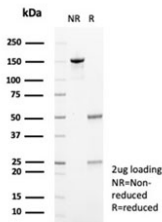
IHC staining of FFPE human colon carcinoma with Fibrillin 1 antibody (clone FBN1/6933). HIER: boil tissue sections in pH 9 10mM Tris with 1mM EDTA for 20 min and allow to cool before testing.



IHC staining of FFPE human prostate tissue with Fibrillin 1 antibody (clone FBN1/6933).
HIER: boil tissue sections in pH 9 10mM Tris with 1mM EDTA for 20 min and allow to cool before testing.



IHC staining of FFPE human kidney carcinoma with Fibrillin 1 antibody (clone FBN1/6933).
HIER: boil tissue sections in pH 9 10mM Tris with 1mM EDTA for 20 min and allow to cool before testing.



SDS-PAGE analysis of purified, BSA-free Fibrillin-1 antibody (clone FBN1/6933) as confirmation of integrity and purity.

Description

Fibrillin-1 / FBN1 is an extracellular matrix glycoprotein that serves as a structural component of calcium-binding microfibrils. These microfibrils provide force-bearing structural support in elastic and non-elastic connective tissue throughout the body. Mutations in this gene are associated with Marfan syndrome.

Application Notes

Optimal dilution of the Fibrillin-1 antibody should be determined by the researcher.

Immunogen

A portion of amino acids 330-476 was used as the immunogen for the Fibrillin-1 antibody.

Storage

Aliquot the Fibrillin-1 antibody and store frozen at -20oC or colder. Avoid repeated freeze-thaw cycles.