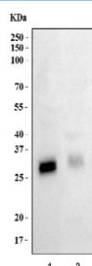


## FHL3 Antibody / SLIM2 (R32532)

Catalog No.	Formulation	Size
R32532	0.5mg/ml if reconstituted with 0.2ml sterile DI water	100 ug

**Bulk quote request**

<b>Availability</b>	1-3 business days
<b>Species Reactivity</b>	Human, Rat
<b>Format</b>	Antigen affinity purified
<b>Clonality</b>	Polyclonal (rabbit origin)
<b>Isotype</b>	Rabbit IgG
<b>Purity</b>	Antigen affinity
<b>Buffer</b>	Lyophilized from 1X PBS with 2% Trehalose
<b>UniProt</b>	Q13643
<b>Applications</b>	Western Blot : 0.5-1ug/ml
<b>Limitations</b>	This FHL3 antibody is available for research use only.



Western blot testing of 1) human K562 and 2) rat heart lysate with FHL3 antibody at 0.5ug/ml. Predicted molecular weight: ~31 kDa, can also be observed at 33-34 kDa.

## Description

Four and a half LIM domains protein 3 is a protein that in humans is encoded by the FHL3 gene. The protein encoded by this gene is a member of a family of proteins containing a four-and-a-half LIM domain, which is a highly conserved double zinc finger motif. The encoded protein has been shown to interact with the cancer developmental regulators SMAD2, SMAD3, and SMAD4, the skeletal muscle myogenesis protein MyoD, and the high-affinity IgE beta chain regulator MZF-1. This protein may be involved in tumor suppression, repression of MyoD expression, and repression of IgE receptor expression. Two transcript variants encoding different isoforms have been found for this gene.

## Application Notes

Differences in protocols and secondary/substrate sensitivity may require the FHL3 antibody to be titrated for optimal performance.

## Immunogen

Amino acids 41-84 (AECQQLIGHDSRELFYEDRHFHEGCFRCCRCQRSLADEPFTCQD from the human protein were used as the immunogen for the FHL3 antibody.

## Storage

After reconstitution, the FHL3 antibody can be stored for up to one month at 4oC. For long-term, aliquot and store at -20oC. Avoid repeated freezing and thawing.