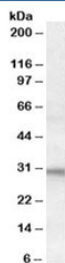


FHL2 Antibody (R35554)

Catalog No.	Formulation	Size
R35554-100UG	0.5 mg/ml in 1X TBS, pH7.3, with 0.5% BSA (US sourced) and 0.02% sodium azide	100 ug

[Bulk quote request](#)

Availability	1-3 business days
Species Reactivity	Human, Mouse
Predicted Reactivity	Cow, Dog, Rat
Format	Antigen affinity purified
Host	Goat
Clonality	Polyclonal (goat origin)
Isotype	Goat Ig
Purity	Antigen affinity
Gene ID	2274
Applications	Western Blot : 1-3ug/ml ELISA (peptide) LOD : 1:16000
Limitations	This FHL2 antibody is available for research use only.



Western blot testing of human heart lysate with FHL2 antibody at 1ug/ml. Predicted molecular weight: ~32kDa.

Description

Additional name(s) for this target protein: Four and a half LIM-domain protein 2

Application Notes

Optimal dilution of the FHL2 antibody should be determined by the researcher.

Immunogen

Amino acids RDDILCPDCGKDI were used as the immunogen for this FHL2 antibody.

Storage

Aliquot and store the FHL2 antibody at -20oC.