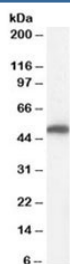


FH Antibody / Fumarate hydratase (R34252)

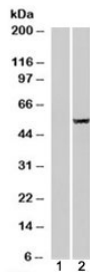
Catalog No.	Formulation	Size
R34252-100UG	0.5 mg/ml in 1X TBS, pH7.3, with 0.5% BSA (US sourced) and 0.02% sodium azide	100 ug

[Bulk quote request](#)

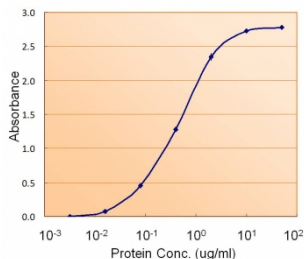
Availability	1-3 business days
Species Reactivity	Human
Predicted Reactivity	Mouse, Rat, Dog
Format	Antigen affinity purified
Host	Goat
Clonality	Polyclonal (goat origin)
Isotype	Goat Ig
Purity	Antigen affinity
UniProt	P07954
Gene ID	2271
Localization	Cytoplasmic, mitochondrial
Applications	Western Blot : 0.01-0.1ug/ml IHC (FFPE) : 3.75ug/ml Enzyme ImmunoAssay : used as capture for recombinant protein (coat at 1-2ug/ml) ELISA (peptide) LOD : 1:64000
Limitations	This FH antibody is available for research use only.



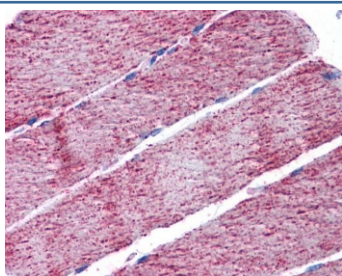
Western blot testing of human kidney lysate with FH antibody at 0.01ug/ml. Predicted molecular weight: ~55/50 kDa (isoforms 1/2).



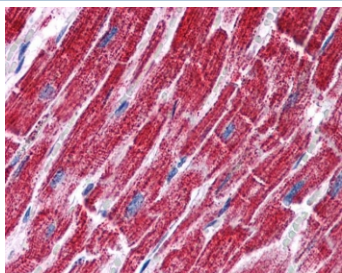
Western blot of HEK293 lysate overexpressing Fumarase probed with FH antibody (mock transfection in lane 1). Predicted molecular weight: ~55/50 kDa (isoforms 1/2).



Sandwich ELISA using the FH antibody at 1.5ug/ml as the detect.



IHC testing of FFPE human skeletal muscle tissue with FH antibody at 3.75ug/ml. Required HIER: steamed antigen retrieval with pH6 citrate buffer; AP-staining.



IHC testing of FFPE human heart tissue with FH antibody at 3.75ug/ml. Required HIER: steamed antigen retrieval with pH6 citrate buffer; AP-staining.

Description

Additional name(s) for this target protein: Fumarate hydratase, Fumarase; FUMH

Application Notes

Optimal dilution of the FH antibody should be determined by the researcher.

Immunogen

Amino acids HPNDHVNKSQSSND were used as the immunogen for this FH antibody. This sequence is common to isoforms 1 and 2.

Storage

Aliquot and store the FH antibody at -20oC.

