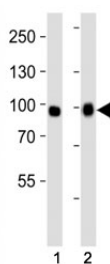


## FGFR3 Antibody (F52700)

Catalog No.	Formulation	Size
F52700-0.4ML	In 1X PBS, pH 7.4, with 0.09% sodium azide	0.4 ml
F52700-0.08ML	In 1X PBS, pH 7.4, with 0.09% sodium azide	0.08 ml

[Bulk quote request](#)

<b>Availability</b>	1-3 business days
<b>Species Reactivity</b>	Human
<b>Format</b>	Antigen affinity purified
<b>Host</b>	Rabbit
<b>Clonality</b>	Polyclonal (rabbit origin)
<b>Isotype</b>	Rabbit Ig
<b>Purity</b>	Antigen affinity
<b>UniProt</b>	Q61851
<b>Applications</b>	Western Blot : 1:1000
<b>Limitations</b>	This FGFR3 antibody is available for research use only.



Western blot analysis of lysate from (1) A549 and (2) HeLa cell line using FGFR3 antibody at 1:1000. Predicted molecular weight: 87-135 kDa depending on glycosylation level.

## Description

Tyrosine-protein kinase that acts as cell-surface receptor for fibroblast growth factors and plays an essential role in the regulation of cell proliferation, differentiation and apoptosis. Plays an essential role in the regulation of chondrocyte differentiation, proliferation and apoptosis, and is required for normal skeleton development. Regulates both osteogenesis and postnatal bone mineralization by osteoblasts. Promotes apoptosis in chondrocytes, but can also promote cancer cell proliferation. Required for normal development of the inner ear. Phosphorylates PLCG1, CBL and FRS2. Ligand binding leads to the activation of several signaling cascades. Activation of PLCG1 leads to the production of the cellular signaling molecules diacylglycerol and inositol 1,4,5-trisphosphate. Phosphorylation of FRS2 triggers recruitment of GRB2, GAB1,

PIK3R1 and SOS1, and mediates activation of RAS, MAPK1/ERK2, MAPK3/ERK1 and the MAP kinase signaling pathway, as well as of the AKT1 signaling pathway. Plays a role in the regulation of vitamin D metabolism. Mutations that lead to constitutive kinase activation or impair normal FGFR3 maturation, internalization and degradation lead to aberrant signaling. Over-expressed or constitutively activated FGFR3 promotes activation of STAT1, STAT5A and STAT5B. Plays a role in postnatal lung development.

## Application Notes

Titration of the FGFR3 antibody may be required due to differences in protocols and secondary/substrate sensitivity.

## Immunogen

This FGFR3 antibody was produced from a rabbit immunized with a KLH conjugated synthetic peptide between 449-482 amino acids from the central region of mouse Fgfr3.

## Storage

Aliquot the FGFR3 antibody and store frozen at -20oC or colder. Avoid repeated freeze-thaw cycles.