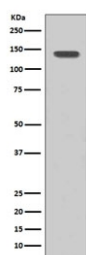


FGFR1 Antibody / Fibroblast growth factor receptor 1 [clone EHC-6] (RQ5362)

| Catalog No. | Formulation | Size |
|-------------|--|--------|
| RQ5362 | Antibody in PBS with 0.02% sodium azide, 50% glycerol and 0.4-0.5mg/ml BSA | 100 ul |

[Bulk quote request](#)

| | |
|--------------------|---|
| Availability | 1-2 weeks |
| Species Reactivity | Human |
| Format | Purified |
| Clonality | Rabbit Monoclonal |
| Isotype | Rabbit IgG |
| Clone Name | EHC-6 |
| Purity | Affinity purified |
| UniProt | P11362 |
| Applications | Western Blot : 1:500-1:1000 |
| Limitations | This FGFR1 antibody is available for research use only. |



Western blot testing of human SH-SY5Y cell lysate with FGFR1 antibody. Expected molecular weight: 75-160 kDa depending on glycosylation level.

Description

The protein encoded by the FGFR1 gene is a member of the fibroblast growth factor receptor (FGFR) family, where amino acid sequence is highly conserved between members and throughout evolution. FGFR family members differ from one another in their ligand affinities and tissue distribution. A full-length representative protein consists of an extracellular region, composed of three immunoglobulin-like domains, a single hydrophobic membrane-spanning segment and a cytoplasmic tyrosine kinase domain. The extracellular portion of the protein interacts with fibroblast growth factors, setting in motion a cascade of downstream signals, ultimately influencing mitogenesis and differentiation. This particular family

member binds both acidic and basic fibroblast growth factors and is involved in limb induction. Mutations in this gene have been associated with Pfeiffer syndrome, Jackson-Weiss syndrome, Antley-Bixler syndrome, osteoglophonic dysplasia, and autosomal dominant Kallmann syndrome 2. Chromosomal aberrations involving this gene are associated with stem cell myeloproliferative disorder and stem cell leukemia lymphoma syndrome. Alternatively spliced variants which encode different protein isoforms have been described; however, not all variants have been fully characterized. [RefSeq]

Application Notes

Optimal dilution of the FGFR1 antibody should be determined by the researcher.

Immunogen

A synthetic peptide specific to human FGFR1 was used as the immunogen for the FGFR1 antibody.

Storage

Store the FGFR1 antibody at -20oC.