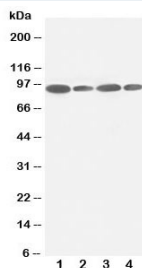


FES Antibody (R30953)

Catalog No.	Formulation	Size
R30953	0.5mg/ml if reconstituted with 0.2ml sterile DI water	100 ug

[Bulk quote request](#)

Availability	1-3 business days
Species Reactivity	Human, Mouse, Rat
Format	Antigen affinity purified
Host	Rabbit
Clonality	Polyclonal (rabbit origin)
Isotype	Rabbit IgG
Purity	Antigen affinity
Buffer	Lyophilized from 1X PBS with 2% Trehalose
UniProt	P07332
Applications	Western Blot : 0.5-1ug/ml
Limitations	This FES antibody is available for research use only.



Western blot testing of FES antibody and Lane 1: HeLa; 2: 293T; 3: SKOV; 4: A549 lysate. Predicted molecular weight ~93 kDa.

Description

Feline sarcoma oncogene is an enzyme that in humans is encoded by the FES gene. This gene encodes the human cellular counterpart of a feline sarcoma retrovirus protein with transforming capabilities. Non-onc intervening sequences were present in the human counterpart. The gene product has tyrosine-specific protein kinase activity and that activity is required for maintenance of cellular transformation. Its chromosomal location has linked it to a specific translocation event identified in patients with acute promyelocytic leukemia, but it is also involved in normal hematopoiesis. A truncated transcript has been identified that is generated utilizing a start site in one of the far downstream exons but a protein product associated with this transcript has not been identified.

Application Notes

The stated application concentrations are suggested starting amounts. Titration of the FES antibody may be required due to differences in protocols and secondary/substrate sensitivity.

Immunogen

An amino acid sequence from the C-terminus of human Feline sarcoma oncogene (FLTFLRTEGARLRVKTLQMQ) was used as the immunogen for this FES antibody (100% homologous in human, mouse and rat).

Storage

After reconstitution, the FES antibody can be stored for up to one month at 4°C. For long-term, aliquot and store at -20°C. Avoid repeated freezing and thawing.