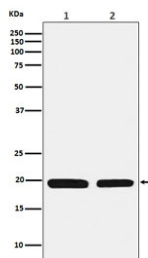


## Ferritin Light Chain Antibody / FTL [clone ACBG-6] (RQ5020)

Catalog No.	Formulation	Size
RQ5020	Antibody in PBS with 0.02% sodium azide, 50% glycerol and 0.4-0.5mg/ml BSA	100 ul

[Bulk quote request](#)

<b>Availability</b>	1-2 weeks
<b>Species Reactivity</b>	Human, Mouse
<b>Format</b>	Purified
<b>Host</b>	Rabbit
<b>Clonality</b>	Rabbit Monoclonal
<b>Isotype</b>	Rabbit IgG
<b>Clone Name</b>	ACBG-6
<b>Purity</b>	Affinity purified
<b>UniProt</b>	P02792
<b>Applications</b>	Western Blot : 1:1000-1:5000
<b>Limitations</b>	This Ferritin Light Chain antibody is available for research use only.



Ferritin Light Chain Antibody HepG2 and Mouse Liver WB. Western blot analysis of 1) human HepG2 and 2) mouse liver lysates using Ferritin Light Chain Antibody detects strong bands at approximately 20 kDa in both samples, consistent with ferritin light chain / FTL. The observed cross-species banding profile supports detection of this intracellular ferritin subunit involved in ferritin complex assembly, iron sequestration, and oxidative stress-responsive cellular regulation pathways in metabolically active hepatic tissues.

### Description

Stores iron in a soluble, non-toxic, readily available form. Important for iron homeostasis. Iron is taken up in the ferrous form and deposited as ferric hydroxides after oxidation. Also plays a role in delivery of iron to cells. Mediates iron uptake in capsule cells of the developing kidney. [UniProt]

For highly specific ferritin light chain detection validated by large-scale protein microarray screening, see our [FTL Antibody / Ferritin Complex Assembly Antibody](#) page featuring clone FTL/1387 with WB, IHC, and protein microarray

specificity validation data.

## **Application Notes**

Optimal dilution of the Ferritin Light Chain antibody should be determined by the researcher.

## **Immunogen**

A synthetic peptide specific to human Ferritin Light Chain / FTL was used as the immunogen for the Ferritin Light Chain antibody.

## **Storage**

Store the Ferritin Light Chain antibody at -20oC.