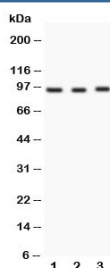


## FER Antibody / FPS/FES-Related tyrosine kinase (R30982)

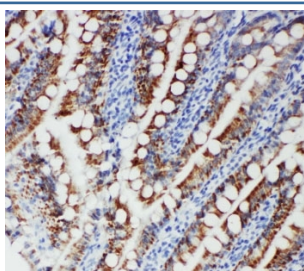
Catalog No.	Formulation	Size
R30982	0.5mg/ml if reconstituted with 0.2ml sterile DI water	100 ug

**Bulk quote request**

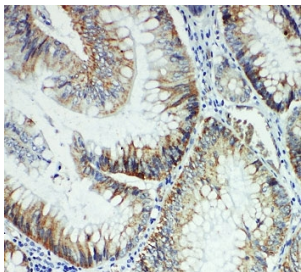
<b>Availability</b>	1-3 business days
<b>Species Reactivity</b>	Human, Rat
<b>Format</b>	Antigen affinity purified
<b>Clonality</b>	Polyclonal (rabbit origin)
<b>Isotype</b>	Rabbit IgG
<b>Purity</b>	Antigen affinity
<b>Buffer</b>	Lyophilized from 1X PBS with 2.5% BSA and 0.025% sodium azide/thimerosal
<b>UniProt</b>	P16591
<b>Applications</b>	Western Blot : 0.5-1ug/ml IHC (FFPE) : 0.5-1ug/ml
<b>Limitations</b>	This FER antibody is available for research use only.



Western blot testing of FER antibody and Lane 1: HeLa; 2: rat testis; 3: rat ovary.  
Predicted/observed molecular weight: ~95 kDa.



IHC-P: FER antibody testing of human intestinal cancer tissue. HIER: steamed with pH6 citrate buffer.



IHC-P: FER antibody testing of rat intestine tissue. HIER: steamed with pH6 citrate buffer.

## Description

FPS/FES-Related tyrosine kinase, also known as TYK3, is an enzyme that in humans is encoded by the FER gene. FER protein is a member of the FPS/FES family of non-transmembrane receptor tyrosine kinases. By in situ hybridization, Morris et al.(1990) concluded that the gene is located at 5q21-q22. Treatment of cells with JMP resulted in the release of FER from the cadherin complex and its accumulation in the integrin complex. The accumulation of FER in the integrin complex and the inhibitory effects of JMP could be reversed with a peptide that mimics the first coiled-coil domain of FER. The results suggested that the protein mediates crosstalk between CDH2 and ITGB1. In FER mutant mice, leukocyte emigration was exaggerated in response to LPS without altering vascular permeability, suggesting that the protein has a role in regulating innate immunity.

## Application Notes

The stated application concentrations are suggested starting amounts. Titration of the FER antibody may be required due to differences in protocols and secondary/substrate sensitivity.

## Immunogen

An amino acid sequence from the middle region of human FER (FSNIPQLIDHHYTTKQ) was used as the immunogen for this FER antibody.

## Storage

After reconstitution, the FER antibody can be stored for up to one month at 4oC. For long-term, aliquot and store at -20oC. Avoid repeated freezing and thawing.