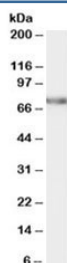


FEM1C Antibody (R34204)

Catalog No.	Formulation	Size
R34204-100UG	0.5 mg/ml in 1X TBS, pH7.3, with 0.5% BSA (US sourced) and 0.02% sodium azide	100 ug

[Bulk quote request](#)

Availability	1-3 business days
Species Reactivity	Human, Mouse, Rat
Predicted Reactivity	Cow, Dog
Format	Antigen affinity purified
Host	Goat
Clonality	Polyclonal (goat origin)
Isotype	Goat Ig
Purity	Antigen affinity
Gene ID	56929
Applications	Western Blot : 0.3-1ug/ml ELISA (peptide) LOD : 1:8000
Limitations	This FEM1C antibody is available for research use only.



Western blot testing of rat kidney lysate with FEM1C antibody at 0.5ug/ml. Predicted molecular weight: ~69kDa.

Description

Additional name(s) for this target protein: Feminization 1

Application Notes

Optimal dilution of the FEM1C antibody should be determined by the researcher.

Immunogen

Amino acids HIPEKLETQVSLHR were used as the immunogen for this FEM1C antibody.

Storage

Aliquot and store the FEM1C antibody at -20oC.