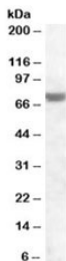


FEM1A Antibody (R34087)

Catalog No.	Formulation	Size
R34087-100UG	0.5 mg/ml in 1X TBS, pH7.3, with 0.5% BSA (US sourced) and 0.02% sodium azide	100 ug

[Bulk quote request](#)

Availability	1-3 business days
Species Reactivity	Human
Predicted Reactivity	Cow, Dog
Format	Antigen affinity purified
Host	Goat
Clonality	Polyclonal (goat origin)
Isotype	Goat Ig
Purity	Antigen affinity
Gene ID	55527
Applications	Western Blot : 1-3ug/ml ELISA (peptide) LOD : 1:4000
Limitations	This FEM1A antibody is available for research use only.



Western blot testing of human heart lysate with FEM1A antibody at 1ug/ml. Predicted molecular weight: ~74kDa.

Description

Additional name(s) for this target protein: Fem-1 homolog a

Application Notes

Optimal dilution of the FEM1A antibody should be determined by the researcher.

Immunogen

Amino acids GFIPEDLEAFIELH were used as the immunogen for this FEM1A antibody.

Storage

Aliquot and store the FEM1A antibody at -20oC.