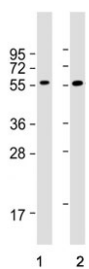


FCRL4 Antibody / Fc receptor-like protein 4 (F55108)

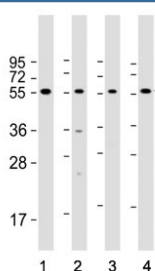
Catalog No.	Formulation	Size
F55108-0.4ML	In 1X PBS, pH 7.4, with 0.09% sodium azide	0.4 ml
F55108-0.08ML	In 1X PBS, pH 7.4, with 0.09% sodium azide	0.08 ml

[Bulk quote request](#)

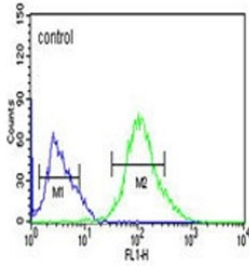
Availability	1-3 business days
Species Reactivity	Human
Format	Purified
Host	Rabbit
Clonality	Polyclonal (rabbit origin)
Isotype	Rabbit Ig
Purity	Antigen affinity
UniProt	Q96PJ5
Applications	Western Blot : 1:1000-1:2000 Flow Cytometry : 1:10-1:50 per million cells in 0.1ml
Limitations	This FCRL4 antibody is available for research use only.



Western blot testing of human 1) Daudi and 2) Raji cell lysate with FCRL4 antibody. Predicted molecular weight ~57 kDa.



Western blot testing of human 1) 293T, 2) Ramos, 3) Raji and 4) Daudi cell lysate with FCRL4 antibody. Predicted molecular weight ~57 kDa.



Flow cytometry testing of human Ramos cells with FCRL4 antibody; Blue=isotype control, Green= FCRL4 antibody.

Description

Fc receptor-like proteins (FCRLs) are a family of receptors that resemble Fc receptors, which are usually found on immune cells and are involved in recognizing and binding to antibodies. FCRL4, in particular, has been shown to be expressed on B cells and T cells, suggesting its involvement in immune regulation. One of the key functions of FCRL4 is its ability to modulate the activation and signaling pathways of immune cells. Studies have indicated that FCRL4 may play a role in regulating B cell responses, including antibody production and immune cell activation. Additionally, FCRL4 has been linked to autoimmune diseases, such as rheumatoid arthritis and systemic lupus erythematosus, highlighting its importance in immune dysregulation.

Application Notes

The stated application concentrations are suggested starting points. Titration of the FCRL4 antibody may be required due to differences in protocols and secondary/substrate sensitivity.

Immunogen

A portion of amino acids 480-507 from the human protein was used as the immunogen for the FCRL4 antibody.

Storage

Aliquot the FCRL4 antibody and store frozen at -20oC or colder. Avoid repeated freeze-thaw cycles.