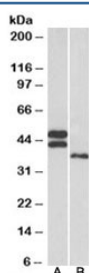


## FCRL1 Antibody (R36126)

| Catalog No.  | Formulation   | Size   |
|--------------|---|--------|
| R36126-100UG | 0.5 mg/ml in 1X TBS, pH7.3, with 0.5% BSA (US sourced) and 0.02% sodium azide | 100 ug |

[Bulk quote request](#)

|                    |  |
|--------------------|--|
| Availability       | 1-3 business days  |
| Species Reactivity | Human  |
| Format             | Antigen affinity purified                                  |
| Host               | Goat   |
| Clonality          | Polyclonal (goat origin)                                   |
| Isotype            | Goat Ig  |
| Purity             | Antigen affinity   |
| Gene ID            | 115350   |
| Applications       | Western Blot : 0.3-1ug/ml<br>ELISA (peptide) LOD : 1:64000 |
| Limitations        | This FCRL1 antibody is available for research use only.    |



Western blot testing of human heart [A] and liver [B] lysates with FCRL1 antibody at 0.3ug/ml. Isoforms 1-3 (40-47kDa) may be detected.

## Description

Additional name(s) for this target protein: Fc receptor-like 1

## Application Notes

Optimal dilution of the FCRL1 antibody should be determined by the researcher.

## Immunogen

Amino acids TAEYEIPSVRES D were used as the immunogen for this FCRL1 antibody.

## **Storage**

Aliquot and store the FCRL1 antibody at -20oC.