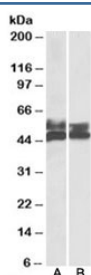


FCRL1 Antibody (R36048)

Catalog No.	Formulation	Size
R36048-100UG	0.5 mg/ml in 1X TBS, pH7.3, with 0.5% BSA (US sourced) and 0.02% sodium azide	100 ug

[Bulk quote request](#)

Availability	1-3 business days
Species Reactivity	Human
Format	Antigen affinity purified
Clonality	Polyclonal (goat origin)
Isotype	Goat Ig
Purity	Antigen affinity
Gene ID	115350
Applications	Western Blot : 0.5-2ug/ml ELISA (peptide) LOD : 1:64000
Limitations	This FCRL1 antibody is available for research use only.



Western blot testing of human tonsil [A] and thymus [B] lysates with FCRL1 antibody at 0.5ug/ml. Predicted molecular weight: ~47/55kDa (unmodified/glycosylated).

Description

Additional name(s) for this target protein: Fc receptor-like 1

Application Notes

Immunogen

Amino acids SRLRKANITDVD were used as the immunogen for this FCRL1 antibody.

Storage

Aliquot and store the FCRL1 antibody at -20oC.