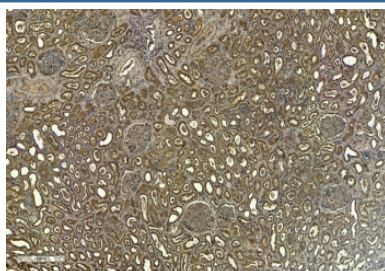


FCER1A Antibody (R36178)

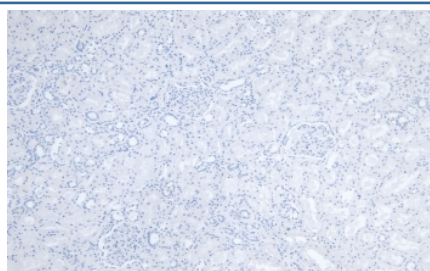
Catalog No.	Formulation	Size
R36178-100UG	0.5 mg/ml in 1X TBS, pH7.3, with 0.5% BSA (US sourced) and 0.02% sodium azide	100 ug

[Bulk quote request](#)

Availability	1-3 business days
Species Reactivity	Human
Format	Antigen affinity purified
Host	Goat
Clonality	Polyclonal (goat origin)
Isotype	Goat Ig
Purity	Antigen affinity
Gene ID	2205
Applications	Immunohistochemistry (FFPE) : 6ug/ml ELISA (peptide) LOD : 1:128000
Limitations	This FCER1A antibody is available for research use only.



IHC staining of FFPE human kidney tissue with FCER1A antibody at 6ug/ml. Required HIER: steamed antigen retrieval with pH6 citrate buffer; HRP-staining.



Negative control: IHC staining of FFPE human kidney tissue without primary antibody. HIER: steamed with pH6 citrate buffer, HRP-staining.

Description

Additional name(s) for this target protein: Fc fragment of IgE, high affinity I, receptor for antibody, alpha polypeptide

Application Notes

Optimal dilution of the FCER1A antibody should be determined by the researcher.

Immunogen

Amino acids TGKVVQLDYESEP were used as the immunogen for this FCER1A antibody.

Storage

Aliquot and store the FCER1A antibody at -20oC.

References (1)