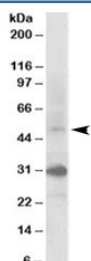


## FBXW2 Antibody (R34618)

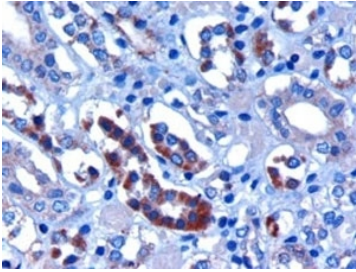
Catalog No.	Formulation	Size
R34618-100UG	0.5 mg/ml in 1X TBS, pH7.3, with 0.5% BSA (US sourced) and 0.02% sodium azide	100 ug

[Bulk quote request](#)

Availability	1-3 business days
Species Reactivity	Human, Mouse, Rat
Predicted Reactivity	Cow, Dog, Pig
Format	Antigen affinity purified
Host	Goat
Clonality	Polyclonal (goat origin)
Isotype	Goat Ig
Purity	Antigen affinity
Gene ID	26190
Applications	Western Blot : 0.3-1.5ug/ml Immunohistochemistry (FFPE) : 2-3ug/ml ELISA (peptide) LOD : 1:128000
Limitations	This FBXW2 antibody is available for research use only.



Western blot testing of human kidney lysate with FBXW2 antibody at 0.3ug/ml. Predicted molecular weight: ~51kDa. Both observed bands were blocked by addition of the immunizing peptide.



IHC staining of FFPE human kidney with FBXW2 antibody at 3ug/ml. HIER: microwaved with pH6 citrate buffer, HRP-staining.

## Description

Additional name(s) for this target protein: F-box and WD repeat domain containing 2

## Application Notes

Optimal dilution of the FBXW2 antibody should be determined by the researcher.

## Immunogen

Amino acids KRGSSFLAGEHPG were used as the immunogen for this FBXW2 antibody.

## Storage

Aliquot and store the FBXW2 antibody at -20oC.