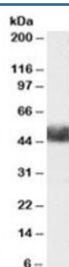


## FBXL3 Antibody (R34616)

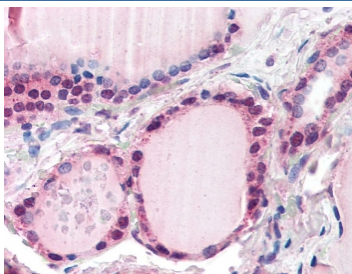
Catalog No.	Formulation	Size
R34616-100UG	0.5 mg/ml in 1X TBS, pH7.3, with 0.5% BSA (US sourced) and 0.02% sodium azide	100 ug

[Bulk quote request](#)

Availability	1-3 business days
Species Reactivity	Human
Predicted Reactivity	Mouse, Rat, Dog, Pig
Format	Antigen affinity purified
Host	Goat
Clonality	Polyclonal (goat origin)
Isotype	Goat Ig
Purity	Antigen affinity
Gene ID	26224
Localization	Cytoplasmic, nuclear
Applications	Western Blot : 1-3ug/ml Immunohistochemistry (FFPE) : 5ug/ml ELISA (peptide) LOD : 1:32000
Limitations	This FBXL3 antibody is available for research use only.



Western blot testing of human adipose lysate with FBXL3 antibody at 1ug/ml. Predicted molecular weight: ~49 kDa.



IHC testing of FFPE human thyroid with FBXL3 antibody at 5ug/ml. Required HIER: steamed antigen retrieval with pH6 citrate buffer; AP-staining.

## Description

Additional name(s) for this target protein: F-box and leucine-rich repeat protein 3

## Application Notes

Optimal dilution of the FBXL3 antibody should be determined by the researcher.

## Immunogen

Amino acids KRGGRDSDRNSSEE were used as the immunogen for this FBXL3 antibody.

## Storage

Aliquot and store the FBXL3 antibody at -20oC.