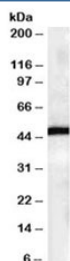


FBXL2 Antibody (R36328)

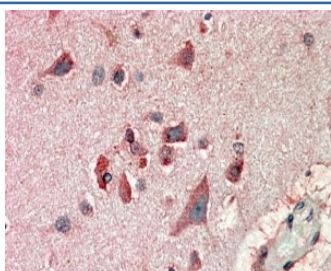
Catalog No.	Formulation	Size
R36328-100UG	0.5 mg/ml in 1X TBS, pH7.3, with 0.5% BSA (US sourced) and 0.02% sodium azide	100 ug

[Bulk quote request](#)

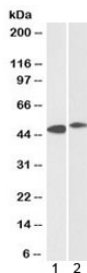
Availability	1-3 business days
Species Reactivity	Human, Rat
Predicted Reactivity	Cow, Dog
Format	Antigen affinity purified
Clonality	Polyclonal (goat origin)
Isotype	Goat Ig
Purity	Antigen affinity
Gene ID	25827
Applications	Western Blot : 0.3-1ug/ml Immunohistochemistry (FFPE) : 5-10ug/ml ELISA (peptide) LOD : 1:32000
Limitations	This FBXL2 antibody is available for research use only.



Western blot testing of human brain lysates with FBXL2 antibody at 0.3ug/ml. Predicted molecular weight: ~47kDa.



IHC staining of FFPE human cerebral cortex with FBXL2 antibody at 10ug/ml. HIER: steamed with pH6 citrate buffer, AP-staining.



Western blot testing of 1) human frontal cortex and 2) rat brain lysates with FBXL2 antibody at 0.3ug/ml. Predicted molecular weight: ~47kDa.

Description

Additional name(s) for this target protein: F-box and leucine-rich repeat protein 2

Application Notes

Optimal dilution of the FBXL2 antibody should be determined by the researcher.

Immunogen

Amino acids VFSNNDEGLINKK were used as the immunogen for this FBXL2 antibody.

Storage

Aliquot and store the FBXL2 antibody at -20oC.